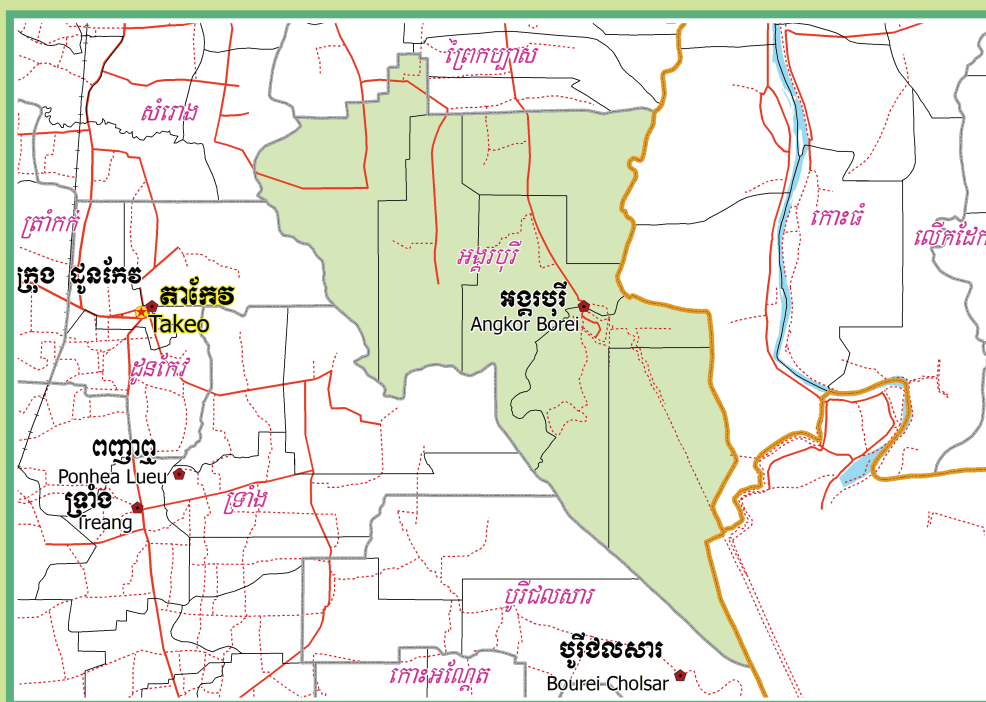


KINGDOM OF CAMBODIA
Nation Religion King



**National Committee for Sub-National
Democratic Development (NCDD)**



ANGKOR BOREI DISTRICT DATA BOOK 2009

District Code Nr: 2101
Takeo Province

October 2009

Angkor Borei District Data Book 2009

District Code Nr: 2101

Takeo Province

Table of Contents

List of Abbreviations	i
Glossary.....	ii
Preface	vi
Introduction	vii
SECTION A: GEOGRAPHY	1
1 Administration and Infrastructure.....	3
2 Land Use and Natural Resources.....	5
3 Geography	7
3.1 Land Area	7
3.2 Distances between Offices	7
SECTION B: DISTRICT PROFILE	9
1 General Information	11
1.1 Population of the District.....	11
1.2 Occupations	12
1.3 Property	14
2 Infrastructure and Economy.....	16
2.1 Roads in meters over 3 years.....	16
2.2 Sewerage Pipes in meters over 3 years.....	16
2.3 Drainage and Bridges	16
2.4 Services in the District	16
2.5 Agriculture.....	17
3 Social Aspects	27
3.1 Education	27
3.2 Health.....	33
3.3 Water and Sanitation	35
3.4 Vulnerable groups.....	39
3.5 Migration	41
4 Natural Resources and Environment (NRE).....	43
4.1 Families involved with NRE issues over 3 years	43
4.2 Percentage of Families involved with Natural Resource issues, by Commune, for 2008	43
4.3 Percentage Houses with access to Garbage collection and Families affected by environmental Pollution, by Commune, for 2008	43
4.4 Percentage Families using chemical Fertilizer and chemical Pesticides, by Commune, for 2008.....	44
5 Administration and Security	44
5.1 Birth Registration across 3 years.....	44

5.2	Number of unregistered Infants born in 2008, by Commune	44
5.3	Registered criminal Cases over 3 years	44
5.4	Registered criminal Cases per 10,000 people, by Commune, for 2008.....	45
5.5	Number of registered Land Disputes, by Commune, in 2008	45
6	Gender	46
6.1	Registered Domestic Violence over 3 years.....	46
6.2	Percentage of registered cases of Families experiencing domestic Violence, by Commune, in 2008	46
6.3	Women's involvement over 3 years.....	46
6.4	Percentage of Female Participants in Civil Society and of 18-60 year women with uncertain Jobs, by Commune, in 2008	47
6.5	Female-headed Households over 3 years.....	47
6.6	Percentage female-headed Households and with Children of less than 5 years old, by Commune, in 2008	47
7	Indigenous People in the District	48
7.1	Ethnic Minorities in the District over 3 years.....	48
7.2	Other Minorities in the District over 3 years.....	48
SECTION C: PLANS AND PROJECTS		49
8	Priorities and Plans	51
8.1	Priorities of Commune Councils for 2009 in the District by Sector	51
8.2	Temporary Agreements by Commune, for 2009	53
8.3	Outputs, estimated and actual costs of C/S Fund Projects between 2005 and 2008, by Commune	58
8.4	Total Expenditure on C/S Fund Projects by sector and commune between 2005 and 2008.....	59
8.5	Actual 2009 C/S Fund projects by Commune	59
9	District level Projects from 2006 to 2009	60
9.1	District Initiative Infrastructure Projects from 2006 to 2009	60
9.2	District Initiative Service Projects from 2006 to 2009	60
9.3	Inter Commune Council Projects in 2008 and 2009	61
9.4	Other Projects in 2008 and 2009	61
SECTION D: SERVICES AND ORGANIZATIONS		63
10	Infrastructure	65
10.1	Length of and Expenditure on Roads in 2008, by District	65
10.2	Scale of and Expenditure on Irrigation in 2008, by District.....	65
10.3	Power Supply in 2008, by District	65
11	Health Facilities.....	66
11.1	Health Facilities in the Province, by Operational District.....	66

11.2 Health Facilities and Staff in the province, by Operational District.....	66
11.3 Deliveries in 2007 in the Province, by Operational District.....	69
12 Education	70
12.1 Schools, Classes, Students, Staff, for for all levels, for 2007/2008 by District.....	70
12.2 Characteristics of Schools and School Principals for 2007/2008 by Commune	70
12.3 Enrolment by Level of Education, 2006/2007 by Commune	71
12.4 Enrolment by Level of Education, 2007/2008 by Commune	71
12.5 Aspects of Enrolment for 2007/2008 by Commune.....	71
12.6 School Buildings for all schools in the District for 2007/2008, by Commune	72
12.7 Conditions of Classrooms and Existence of Separate School Office and Library, by Commune	72
12.8 Community Participation and Financing across all schools in the District for 2007/2008 by Commune	73
12.9 Percentage Student Flow Rates and Graduation by level 2006/2007, by Commune	73
13 Staff and Resources at the District	74
13.1 District Councilors elected in 2009	74
13.2 Committees of the Council.....	74
13.3 Board of Governors.....	75
13.4 Offices under Sala Krong, Sala Srok and Sala Khan	75
13.5 Municipality/District/Khan line offices.....	75
13.6 Properties and Equipment of District Administration	76
13.7 Registered Revenue of the District Administration in 2008	77
13.8 Services in the District	77
13.9 Civil Society Organizations active in the District.....	77
13.10 Private Sector Organizations.....	79
SECTION E: POVERTY DATA	81
14 Data on Poverty	83
14.1 Predicted Poverty Rates for 2009, by commune	83
14.2 Poverty data from survey.....	83

List of Abbreviations

#	Number
AGR	Agriculture
BR	Birth Registration
C. Pilot	Piloted Commune
C/S	Commune / Sangkat
CBO	Community-Based Organization
CDB	Commune Database
CDPD	Commune Development and Planning Database
CIP	Commune Investment plan
CLTS	Community Led-Total Sanitation
Comm.	Commune
Com Cov	Commune Covered
CPA	Complementary Package of Activities
CPS	Community Preschool
CCWC	Commune Committees for Women and Children
DANIDA	Danish International Development Agency
DDLG	Democratic Development and Local Governance Project (EC-UNDP)
DFID	Department For International Development (UK)
DIP	District Initiative Project
DIS	District Information System
District PDRD	District Office of Rural Development
District WP	District Work Plan
DIW	District Integration Workshop
DoLA	Department of Local Administration
Dr	Doctor
DWRM	District Office of Water Resource and Meterology
ECD	Early Childhood education (part of PE)
EMIS	Education Management Information System
Event IC	Celebration of International Days
FDH	Former District Hospital
GTZ	German Society for Technical Cooperation (Gesellschaft für Technische Zusammenarbeit GmbH)
Ha	Hectare
HC	Health Center
HC (NB)	Health Center (no building)
HH	Headed Household
HSI	Intervention for Health
HP	Health Post
HW	Hand Washing
ICC	Inter Commune Council
IFAD	International Fund for Agricultural Development
IND	Industry
Inter-commune	Inter-Commune Project Management Committee or Inter-commune project
IO	International Organization
LASED	Land Allocation for Socio-Economic Development
LGCR	Local Governance for Children's Rights
M&E	Monitoring and Evaluation
MA	Medical Assistant
MoEYS	Ministry of Education, Youth and Sports
MoH	Ministry of Health

MoP	Ministry of Planning
MPA	Minimum Package of Activities
MW1	Primary Midwives
MW2	Secondary Midwives
n/a	Not available
NCD	National Contracts Database
NCDD	National Committee for Sub-National Democratic Development
NGO	Non-Governmental Organization
NRML	Natural Resources Management and Livelihood
NU1	Primary Nurse
NU2	Secondary Nurse
OD	Operational District
ODF	Open Defecation Free
Ope. Costs	Operational Costs
Others	Other Staff
PBW	Public Works
PDoEYS	Provincial Department of Education, Youth and Sport
PDRD	Provincial Department of Rural Development
PDWRM	Provincial Department of Water Resource and Meteorology
PE	Parenting Education
PHAST	Participatory Hygiene and Sanitation Transformation
PHD	Provincial Health Department
PID	Project Information Database
PMC	Project Management Committee
Pop 04-05	Population Covered 2004 or 2005
PSDD	Project to Support Democratic Development through Decentralization and Deconcentration
RRD	Rural Road Development
RH	Referral Hospital
RILGP	Rural Investment and Local Governance Project
RPRP	Rural Poverty Reduction Program
RuLIP	Rural Livelihoods Improvement Program
SIDA	Swedish International Development Cooperation Agency
SPPA	Senior Provincial Program Advisor
TBA	Traditional Birth Attendant
UNDP	United Nations Development Project
UNICEF	United Nations Children's Fund
Vil	Village
Vil Cov	Village Covered
VIL-HC	Distance from Village to Health Center
WASH	Water, Sanitation and Hygiene
WRM	Water Resource and Meteorology

Glossary

C/S Fund: The Commune/Sangkat Fund is established and managed by the Government of Cambodia to provide financial support for development projects and administrative costs of Commune/Sangkat Councils. The amount is determined as a percentage of the National Budget (for 2009: 2.8% over the 2008 budget) and is expected to increase gradually over the years. The total 2009 budget under this fund is \$ 27,643,902 (of which \$ 19,272,170 is for Development Projects and \$ 8,371,731 for Administration). Under the Rural Investment and Local Governance Project the World Bank currently reimburses the costs of development projects if these meet the Bank's criteria.

CDB: the Commune Data Base is a national database, compiled by the Ministry of Planning, on the basis of detailed questionnaires, completed at village and commune level, which are then sent to the Departments of Planning for data entry. The most recent round of data collection took place at the end of 2008 (and is reflected in the District Data Books). Commune, District and Provincial Profiles can be generated from this database and should be available from provincial Departments of Planning.

CDPD: the Commune Development and Planning Database is a database maintained by Departments of Planning and Ministry of Planning, recording proposed activities as determined and prioritized by Commune and Sangkat Councils; the Temporary Agreements between these councils and supporting agencies, as decided at District Integration Workshops and details on projects that actually take place at commune, district and provincial levels.

CIP: The Commune Investment Plan is a rolling three-year plan, developed and decided by the Commune or Sangkat Council. It sets priorities and identifies the projects proposed for the years to come.

Commune and Sangkat (C/S): the Communes (in rural areas) and Sangkats (in urban areas) are the lowest and smallest units of local government. Councils are elected directly, once in five years, for the 1417 Communes and 204 Sangkats. In the C/S there are 14,119 villages, which have Village Chiefs, but don't constitute a formal level of local government.

DIP: the District Initiative Project is jointly supported by the MDLF (Multi-Donor Livelihood Facility (supporting the NRM&L Program)) and PSDD. In 2009 it covers 106 districts, 60% of the total in the country, with a budget of \$ 3.2 million. It is focused on capacity development in planning, democratic development, public competitive procurement, financial management and service delivery.

DIS: The District Information System is a national database maintained by NCDD, recording resources, staff, revenue, infrastructure and equipment available in the 193 Districts and Khans throughout the country. The last update took place in July 2009.

District, Municipality and Khan constitutes the third level of Government in Cambodia. There are 159 rural Districts, 26 Municipalities and 8 Khans of Phnom Penh Capital. They all have Councils which were, for the first time, elected in May 2009, by the Commune/Sangkat Councilors. These councils have a mandate for 5 years.

DIW: District Integration Workshops are held between July and October, to bring Commune/Sangkat Councils, looking for support for their projects, together with the governmental and non-governmental agencies that may provide support.

ICC: Inter Communes Council projects are executed in 10 provinces under the Democratic and Decentralized Local Governance Project (DDLG). This five year project (2006-2010) is executed by Ministry of Interior and funded by the European Commission and UNDP. The project focuses on improving dialogue partnership and accountability; create a network of Commune Councils at the provincial and national level and support and contribute to local area development for poverty reduction. The work under the ICC component supports investments and services formulated through inter-commune dialogue and planning.

MEDiCAM: A non-profit and non-partisan membership organization for NGOs active in Cambodia's health sector. It is the primary networking agency for health-related NGOs.

NCDD: the National Committee for sub-National Democratic Development is the inter-ministerial body charged with the implementation of the Organic Law (a key legislative document, adopted in 2008, outlining the envisaged decentralization). NCDD also channels substantial financial assistance by a number of Development Partners, to projects and programs at various levels. This amounted to over \$ 91 million in 2008. More information at: www.ncdd.gov.kh. This website also provides access to reports, manuals, legal documents, details on projects and more.

OD: the Operational Districts are the districts as defined and used by the Ministry of Health. These do not coincide with the 193 (Administrative) Districts and Khans, as used by all other RGC agencies. The Operational Districts are usually larger, and so there are 77 Operational Districts against 193 administrative Districts and Khans. However they do fit within the boundaries of administrative provinces.

PID: The Project Information Database is the database maintained by NCDD at national and sub national level, to follow all aspects of projects by Commune and Sangkat Councils, including the C/S Fund projects

Provincial Investment Fund (PIF)

The Provincial Investment Fund is allocated to all Provinces and Municipalities according to a population based formula. Part of the fund is earmarked for support to planning activities of the Provincial / Municipal Department of Planning; and to gender mainstreaming activities of the Provincial Department of Women's Affairs. The remaining "un-earmarked PIF" is allocated by PRDC to sectoral technical departments against established criteria and in response to proposals with prioritisation taking into account: priorities formulated by the CS Councils and aggregated by District into District Priority Activities Matrices (DPAM); alignment with national planning and poverty alleviation criteria, complementarity with other planned activities; and performance of the Department concerned in implementation of activities in previous years. With this provisional allocation, the Department then programs activities through the District Integration Process. Finally, the agreed activities, plus support costs amounting to no more than 25% of the total, are included in a sub-contract signed between PRDC and the Department, pursuant to the overall PSDD contract signed between NCDD and PRDC. Total budget has been around \$ 2 million per year.

Province: the 23 Provinces and Phnom Penh Capital City represent the 2nd layer of government. They vary in size, from very small, like Kep (approx. 36,000 people) and Pailin (approx. 70,000 people), or large but with small populations, like Mondulkiri (over 60,000 people), and Ratanakiri (over 153,000) to densely populated and large, like Kampong Cham (over 1.7 million people) and Kandal (approx. 1.4 Million people).

PSDD: the Project to Support Democratic Development through Decentralization and Deconcentration is funded by DFID (UK), SIDA (Sweden) and UNDP and runs from 2006 till the end of 2010 (including a one year extension). Annual budgets range from \$ 11 million to over \$ 18 million. The project provides core technical support to NCDD and to the provinces, financial support to the C/S Fund, District Initiative, Provincial Investment Fund and capacity building support through training, studies and advisory services.

RILGP: The Rural Investment and Local Governance Project is a World Bank funded project that provides substantial support to C/S Fund projects and to developing the required infrastructure, policies, systems and skills. It started in 2003 with a Loan for \$ 22 million for 2003-2007 and was then extended with a Grant of \$ 36 million for the period of 2007-2010. Discussions about a possible RILGP 2 are taking place between RGC and the World Bank.

RPRP: the Rural Poverty Reduction Project is a seven year project from 2004 till 2010, funded by IFAD and UNDP and implemented through the Ministry of Agriculture, Forestry and Fishery, supported by the Ministry of Interior and facilitated by NCDD. The project is active in the provinces Prey Veng and Svay Rieng and focuses on 120,600 households below poverty line. The objective is poverty reduction with the active participation of the poor through improved livelihoods, Strengthened capacity, Sustainable farming systems and natural resource management, new and/or rehabilitated infrastructure development, increase accessibly to technology, services and markets for their economic and social development.

RULIP: the Rural Livelihoods Improvement Project is implemented by the Ministry of Agriculture Forestry and Fisheries (MAFF)' Project Support Unit- PSU, with the NCDD playing the role of cooperating agency. Funded by IFAD and UNDP, the project will run till 2014. The target group consists of poor households who have little or even no land, few livestock or other assets and often many dependents. The main goal of the project is to directly or indirectly improve the livelihood systems, food security and incomes of a total of 33,900 rural poor, ethnic minority and female headed households in targeted village of Kratie, Preah Vihear and Ratanakiri provinces in a sustainable manner.

Seth Koma: The UNICEF funded Seth Koma program focuses on measurable action for children and women. During 2006 -2010 it is implemented in six provinces. Government and UNICEF pursue a set of inter-related goals, addressing critical stages of the life cycle of the child: a) Mothers have safe pregnancies and deliveries and healthy newborns; b) best possible start in life of infant; c) Children enter schools at the right age of six years; d) Children are protected from exploitation, abuse, violence, discrimination and other risks; and e) Youth and adolescents acquire life skills, express their views, participate in the decisions.

Preface

The Government of Cambodia attaches great importance to optimal use of scarce resources and to participatory planning and management at all levels. The Organic Law which was adopted in 2008 provides the legal context for further steps towards improving and decentralizing planning, management and monitoring, and towards greater accountability and transparency of institutions at sub-national levels.

The Government has established elected Councils at the sub-national levels, and we will progressively give them the responsibilities, together with the human and financial resources, to deliver a wide range of public services. They will be more democratic, more efficient, more transparent and accountable, better at addressing gender and other inequalities, and at fighting corruption. We recognize that development does not come from government alone; it needs the involvement of citizens, civil society and the private sector, and the new system will facilitate this.

A central element in this process is the availability of information on any aspect of development to all concerned parties. The newly elected Councillors at District and Khan level, line departments operating at these levels, but also NGOs, Development Partners, Commune Councillors and citizens throughout Cambodia need information on problems and requirements, resources and opportunities, services and agencies, plans and projects. They will need such information to better understand the present situation, set targets for the future, monitor progress, know what others are doing and to apply resources wisely and this is the reason the District Data books will be so valuable.

The District Data Books are a major step towards full transparency and towards informed planning and decision-making. They provide all available data at District, Khan, Commune and Sangkat level in easily accessible formats, in Khmer and English, through over 16,000 printed copies, CD-ROMs and the NCDD website.

This is the first time in Cambodia (and possibly in South East Asia) that such detailed information is made so widely available and NCDD should be commended for the hard work that has gone into this. We also thank the Ministry of Planning, which provided the detailed data of the Commune Data Base, the sectoral ministries and provincial authorities who contributed data and the Development Partners who provided financial support.

It is our sincere hope that the publication of the District Data Books will strengthen capacities, especially at district levels, for evidence-based development planning. We also hope that this information will deepen the understanding among Ministries, Provincial Authorities, Development Partners, NGOs and research agencies of the realities at commune and district levels.

We call upon all to use and distribute this information, complement or correct where appropriate and to contribute new data in the years to come.

Sar KHENG

Deputy Prime Minister, Minister of Interior and Chairman of NCDD

Introduction

Purpose

The purpose of the District Data Books is to bring together information on any aspect of life and development of Districts, Khans, Communes and Sangkat, together and make this widely available. The primary targets are the newly elected District Councilors, district level line departments, provincial agencies, Development Partners and NGOs operating at this level. They need detailed knowledge on current living conditions, natural resources, infrastructure, agriculture and other economic activities, current service levels, past and planned projects and available resources.

While much information exists on many of the above aspects, it is often hard to access that information and much is lost to reports, databases and statistics that are not widely shared. Data are often only available in one language and often out-of-date, and many reports cover only one sector or region.

We found that these problems are especially acute at the district level. Now that Districts are becoming a much more significant level of local government and development planning, there is an urgent need for wide-ranging data to be used for setting base-lines, planning and prioritizing, monitoring and learning.

Approach

We have attempted to identify and compile all available statistics, reports, maps and other data at district and/or commune level. From this we have selected information that is available for all or most districts, reasonably reliable and up-to-date, sufficiently detailed and of possible interest to development planners, decision makers, agencies and citizens.

The major sources of the information in these District Data Books are:

- a) The Commune Data Base information over the years 2006 to 2009 (the most recent data were collected late last 2008), as compiled by the Ministry of Planning
- b) Detailed information directly collected from the Ministry of Health, the Ministry of Education, Youth and Sports and (for maps) the Ministry of Land Management, Urban Planning and Construction
- c) The Project Information Database (PID) at NCDD (up-to-date)
- d) The Commune Development and Planning Database (CDPD) (up to date)
- e) The District Information System (DIS) (updated per Mid 2009)
- f) Direct data collection at provincial and district level on private sector, irrigation, roads, and electricity, through provincial agencies
- g) Medical data collected from MEDiCAM
- h) The ID Poor Project – for poverty data on a number of provinces and districts
- i) NCDD's work on predictive poverty rates
- j) Specific projects for outputs, plans and budgets (Seth Koma, RILGP, RPRP and ICC)

Limitations of the data

We are fully aware that the data we collected are not always complete, consistent or correct. While we have rejected information that was wrong or very incomplete, we decided not to aim for statistical and scientific perfection, but to include information that is useful, relevant

and comprehensive. We also accepted different sources for the same data as this may encourage discussion on the quality of the respective data.

We strongly encourage anyone who notes errors or incompleteness in these data to contact us and to share their data. We hope that the next round of producing such District Data Books can draw on wider sources and more complete data.

We encourage the District Administrations, who receive these data also in digital format, not only to use these for their planning and monitoring, but also to start correcting and updating these data and to share new data with NCDD for future use.

Contents

The information in the following pages is organized in five sections:

- a) **Geographical data:** this section provides maps on infrastructure and administration and on land use and natural resources management. These maps are also provided in large format to all Districts and Khans.
- b) **District Profile:** this presents wide ranging data, covering 2006 – 2009, at district and commune level, extracted from the Commune Data Base, but edited for better understanding.
- c) **Plans and Projects:** this section presents development priorities determined by Commune and Sangkat Councils, Temporary Agreements, outputs and expenditure of major projects at Commune and District level over 2006 – 2008 and plans and budgets for 2009.
- d) **Services and Organizations:** this section provides details on key infrastructure (roads, electricity, irrigation systems) and services in health and education at district and commune level. It also provides an inventory of resources at the District Administration, NGOs operating in the district and private sector agencies active in the district.
- e) **Poverty Data:** this section provides predicted poverty rates for 2009 for all districts and communes and detailed poverty data compiled and processed by the ID Poor project for those that have been covered by this project.

The future

It is our hope that this is the start of a longer-term process. We hope that a next edition of these District Data Books will offer more comprehensive, correct and up-to-date information. We hope that the District Administrations will not only start using this information, but also improve and update it. For this they are all provided with the full data set in digital format.

We invite agencies, projects and experts to send reports, statistics and maps that could be used for a next version to us and we invite all users of the District Data Books to inform us about errors, updates and inconsistencies. Please contact us through info@ncdd.gov.kh

We now invite you to browse through this data book. You may open this randomly or use the table of contents and go to the aspects that have your special interest.

We hope that you will be informed, surprised and assisted. We hope, above all, that this information will lead to a deeper understanding of causes and effects of poverty, to purposeful decisions on how to tackle those causes and to greater transparency in using scarce resources for the benefit of all.

Martin de Graaf
Program Advisor, PSDD/NCD

SECTION A: GEOGRAPHY

1 Administration and Infrastructure

Please see separate folder containing A3 maps.

2 Land Use and Natural Resources

Please see separate folder containing A3 maps

3 Geography

3.1 Land Area

Total Land Area (ha)	Forest Land Area (ha)		Cultivation Land Area (ha)	Construction Land Area (ha)	Other Land Area (ha)
	Total	Flooded Forest Area			
30368	2523	2523	19217	1958	6670

3.2 Distances between Offices

Location	Distance (Km)
From District Office to C/S Office of Angkor Borei	2
From District Office to C/S Office of Ba Srae	10
From District Office to C/S Office of Kouk Thlok	13
From District Office to C/S Office of Ponley	25
From District Office to C/S Office of Preaek Phtoul	1
From District Office to C/S Office of Prey Phkoam	24

SECTION B: DISTRICT PROFILE¹

¹ All data in this section come from the Commune Database (CDB) unless otherwise specified. These include primarily new CDB data, collected late 2008, and some data from earlier years. Please note that percentages are rounded to the nearest whole number.

1 General Information

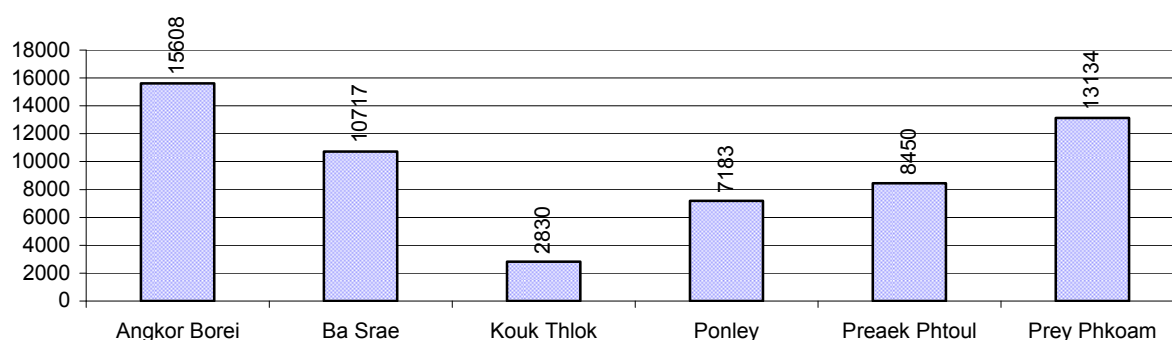
1.1 Population of the District

1.1.1 Total Population

Number of families	2005	2006	2007	2008
Total number of families	9,152 families	9,150 families	9,373 families	9,607 families
Increase (+)/Decrease (-) in nr of families		0%	2%	2%
Total population	51,646 pers	52,976 pers	56,792 pers	57,922 pers
Increase (+)/Decrease (-) in nr of people		3%	7%	2%
Number of female Headed Households (HH)	1,050 families	1,159 families	1,170 families	1,410 families

Note: Percentages of population and increase/decrease are calculated on basis of the previous year. A negative sign in front of the percentage indicates a decrease in population.

1.1.2 Population, by Commune, in 2008



1.1.3 Population, by Age Group, over 3 years

Population by age group	2006	2007	2008	
	%	%	%	Number
Age 0-5 years (as percentage of the population)	14%	14%	16%	8,994 persons
Male 0-5 yrs	48%	51%	52%	4,632 persons
Female 0-5 yrs	52%	49%	48%	4,362 persons
Age 6-17 (as percentage of the population)	31%	30%	30%	17,580 persons
Male 6-17 yrs	51%	51%	51%	8,929 persons
Female 6-17 yrs	49%	49%	49%	8,651 persons
Age 18-60 (as percentage of the population)	49%	50%	49%	28,108 persons
Male 18-60 yrs	49%	49%	48%	13,510 persons
Female 18-60 yrs	51%	51%	52%	14,598 persons
Age 61 above (as percentage of the population)	6%	6%	6%	3,240 persons
Male 61	51%	48%	47%	1,535 persons
Female 61	49%	52%	53%	1,705 persons

Note: The overall percentage for each age group is calculated on the basis of the total population. The gender distribution of each group is calculated on the basis of the population within that particular age group.

1.2 Occupations

1.2.1 Percentage of families with a particular Occupation over 3 years

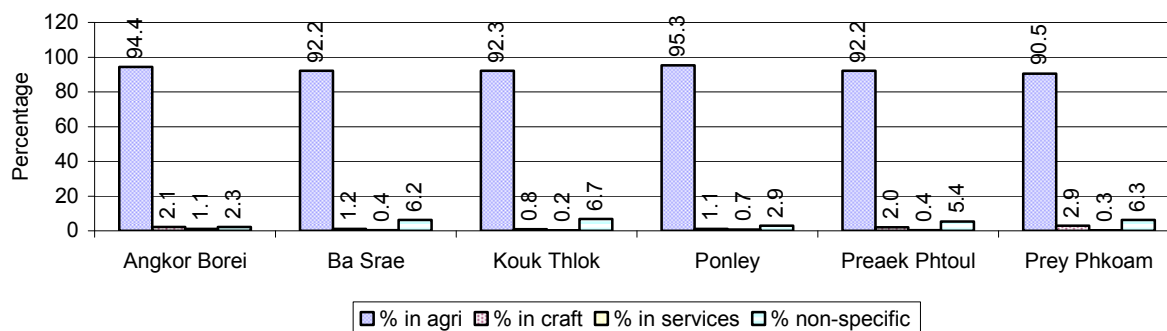
This table shows the percentage of the population who have a particular occupation (job), for example the percentage of the population in the district who are rice farmers, furniture crafter, trader, etc.

Description	2006	2007	2008	
	%	%	%	Number
Families whose main occupation is agriculture	91%	92%	93%	8,923 Families
Families whose primary occupation is rice farming	91%	90%	91%	8,747 Families
Families whose primary occupation is cultivating long-term crops	0%	0%	0%	0 Families
Families whose primary occupation is cultivating short-term crops	0%	0%	1%	64 Families
Families whose primary occupation is cultivating vegetable	0%	0%	0%	40 Families
Families whose primary occupation is fisherman	0%	1%	1%	50 Families
Families whose primary occupation is livestock farmer	0%	0%	0%	22 Families
Families whose primary occupation is NTFP collection	0%	0%	0%	0 Families
Families whose main occupation is craft work	1%	2%	2%	178 Families
Families, whose main occupation is in furniture craft, wooden, rattan, vine, bamboo	0%	0%	0%	0 Families
Families whose main occupation is in metal, aluminum, glass goods production	0%	0%	0%	0 Families
Families whose main occupation is food production	0%	0%	0%	15 Families
Families whose main occupation is tire, plastics and rubber goods production	0%	0%	0%	0 Families
Families whose main occupation is textile, clothing goods production	0%	2%	2%	153 Families
Families whose main occupation is in other production, not listed above	0%	0%	0%	10 Families
Families whose main occupation is services	3%	0%	1%	57 Families
Families whose main occupation is trade	1%	0%	0%	11 Families
Families whose main occupation is repair	1%	0%	0%	24 Families
Families whose main occupation is providing transport services	0%	0%	0%	17 Families
Families whose main occupation is providing other services	2%	0%	0%	5 Families
Families whose main occupation is not clear (or multi)	4%	6%	5%	449 Families

Note: The occupation percentages are calculated on the basis of the total number of families.

1.2.2 Percentage Families that work in one of four occupational sectors, by Commune in 2008

This table indicates the percentage of families involved in one of four occupation types: agriculture, craft, services or non-specific (other). Please note agriculture includes forestry activities such as cutting down trees and gathering gum from the trees.



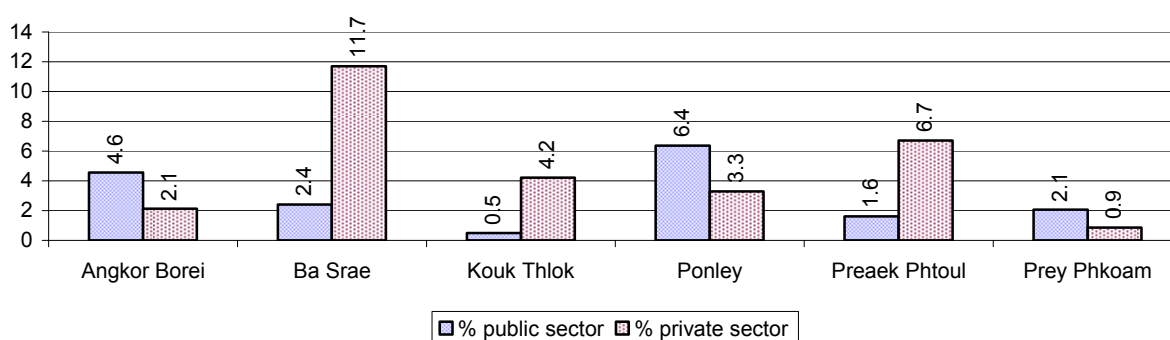
Note: Calculated on the basis of the total number of families within a commune.

1.2.3 Percentage of Families with public Sector, private Sector or uncertain Jobs, over 3 years

Description	2006	2007	2008	
	%	%	%	Number
Families that have a family member who is a government official, staff or worker	3%	3%	3%	309 families
Families that have a family member who is a private sector staff or worker	5%	5%	5%	462 families
Number of people aged 18-60 with uncertain/irregular jobs	1%	2%	2%	567 persons

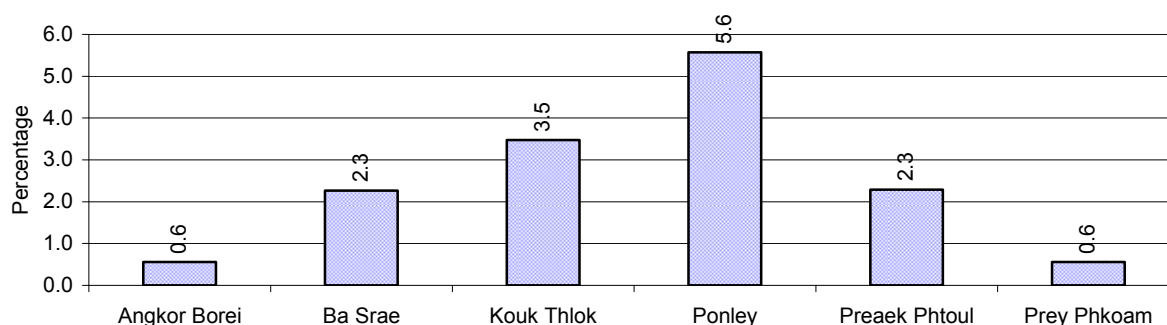
Note: In the first two rows percentages are calculated on the basis of the total number of families. In the third row the percentage is calculated on the basis of the total number of people aged 18-60 years.

1.2.4 Percentage of Families with public or private Sector Jobs, by Commune in 2008



Note: Calculated on the basis of the total number of families in the commune

1.2.5 Percentage of People aged 18-60 years with uncertain/irregular Jobs, by Commune, in 2008.



1.3 Property

1.3.1 Housing types and facilities over 3 years

This table shows the percentage of people living in a certain type of house. It also indicates how many houses have electricity or battery powered lights and how many have TV.

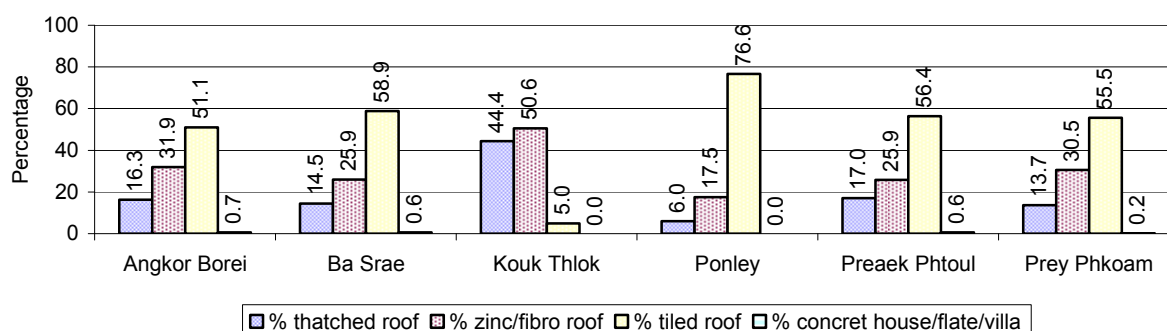
House Type	2006	2007	2008	
	%	%	%	Number
House with thatched roof	20 %	18 %	16 %	1,440 houses
House with zinc/fibro roof	25 %	26 %	28 %	2,642 houses
House with tiled roof	55 %	56 %	56 %	5,156 houses
Flats/apartments (with many families living)	0 %	0 %	0 %	23 houses
Concrete house or flat (with one family living)	0 %	0 %	0 %	23 houses
Villa house	0 %	0 %	0 %	0 houses
Houses with electricity	5 %	9 %	20 %	1,840 houses
Houses with battery light	85 %	81 %	73 %	6,776 houses
Houses with TV	70 %	75 %	74 %	6,895 houses

Note: Calculated against the total number of houses

1.3.2 Families living on public Land or without a permanent House

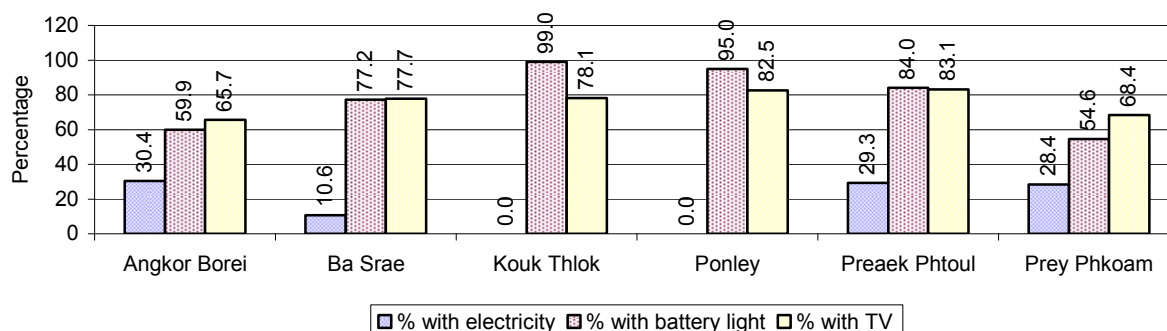
Living situation	2006	2007	2008
Families living in a house on public land	65 families	103 families	118 families
People, without permanent housing	11 person(s)	10 person(s)	5 person(s)

1.3.3 Percentage of Population living in a particular type of House, by Commune, in 2008



Note: Calculated against the total number of houses in each commune

1.3.4 Percentage of Houses with Electricity, Battery Lights and/or TVs, by Commune, in 2008



Note: Calculated against the total number of houses in each commune

1.3.5 Types of Vehicles and their ratio to Families across 3 years

This table shows the number of families per vehicle in the district. The last column shows the total number of each type of vehicle in the district for 2008.

Description	2006 ratio	2007 ratio	2008	
			Ratio	Number
Bicycle and bicycle with trailer	2	2	2	5,725
Ox-carts and horse-carts	5	6	6	1,516
Motorbike/with trailer	6	5	4	2,514
Motor tri-cycle	145	N/A	N/A	0
Large Transportation				
Total number of cars/trucks	96	94	76	127
Locally made vehicles	352	361	320	30
Trucks for goods transport	339	302	283	34
Buses/mini buses for passengers	610	493	457	21
Family cars	339	391	229	42
Agriculture machinery				
Tractors used for plowing	1,144	1,172	1,067	9
Power-tillage used for plowing	15	12	11	907
Other type of machinery				
Other type of machinery	247	469	506	19
Water transportation				
Row boats	5	6	5	2,049
Total number of motor boats	7	11	11	909
Motor boats used for fishing	9	15	14	702
Motor boats used for passengers	436	375	400	24
Motor boats used for goods transporting	53	47	52	183

Note: Ratio of families to a particular type of vehicle is the result of the total number of families divided by total number of that type of vehicle. Other types of vehicles, such as bulldozer, excavator, rollers etc. are not listed.

2 Infrastructure and Economy

2.1 Roads in meters over 3 years

Description	2006	2007	2008
Bituminous road	0 m	0 m	0 m
DBST, Macadam road	0 m	0 m	9,600 m
Concrete road	0 m	0 m	0 m
Laterite road	33,500 m	24,200 m	34,500 m
Constructed earth road	23,900 m	15,200 m	8,328 m
Un-constructed earth road	113,500 m	116,300 m	122,000 m

2.2 Sewerage Pipes in meters over 3 years

Description	Sewage pipe length		
	2006	2007	2008
Total length of sewage pipe, diameter 30-50 cm	76 m	0 m	7 m
Length of newly constructed sewage pipe, diameter 30-50 cm	0 m	0 m	66 m
Length of sewage pipe, diameter 30-50 cm needs repair/rehabilitation	20 m	0 m	2 m
Total length of sewage pipe, diameter of pipe 60-100 cm	75 m	0 m	47 m
Length of newly constructed sewage pipe, diameter 60-100 cm	0 m	0 m	4 m
Length of sewage pipe, diameter 60-100 cm needs repair/rehabilitation	10 m	0 m	1 m
Sewage pipe, diameter of pipe over 100 cm	28 m	0 m	27 m
Length of newly constructed sewage pipe, diameter over 100 cm	7 m	0 m	29 m
Length of sewage pipe, diameter over 100 cm needs repair/rehabilitation	0 m	0 m	0 m

2.3 Drainage and Bridges

Construction Type	2006		2007		2008	
	place(s)	Length	place(s)	Length	place(s)	Length
Single pipe culvert	23	171m	13	245 m	24	1,771 m
Double-pipe culvert	5	36m	2	23 m	5	36 m
Box pipe culvert	25	193m	15	123m	25	193 m
Wooden bridge	0	0m	0	0m	0	0 m
Concrete bridge	2	40m	5	155m	3	55 m
Bale bridge	0	0m	1	20m	1	20 m
Spillway construction	0	0m	1	16m	8	65 m

2.4 Services in the District

Descriptions	Number of places by year		
	2006	2007	2008
Public			
Electricity generating stations	8	7	5
Health clinics	1	1	0
Private			
Bicycle and motorcycle repair places	35	30	47
Agricultural machinery, tools and equipment repair places	10	9	5
Electronic tool repair places	13	12	16
Battery-charging services	30	28	22
Handicraft places, wooden furniture and forest by-products	0	0	0
Other handicraft places (excluding furniture)	0	0	0
Small-scale services (hairstylist, phone service, massage,	26	30	53

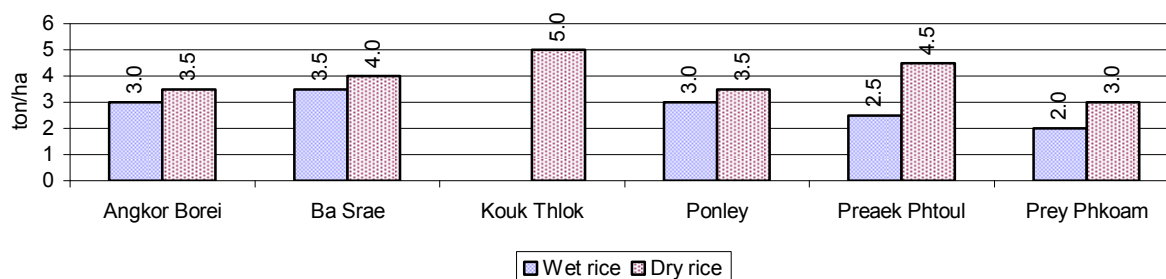
Descriptions	Number of places by year		
	2006	2007	2008
Karaoke, etc)			
Small-scale food shop businesses (Food, groceries, drink shop, etc)	62	64	109
Small-scale rice mills	61	47	40
Medium or large-scale rice mills	5	7	13
Small-scale markets	3	3	3
Large-scale market	0	0	0
Alcohol refinery places	18	33	38
Pharmacies and small drug stores	3	4	7
Hotels	0	0	0
Guest houses	0	0	0
Restaurants	0	0	0
Gasoline stations	1	1	2

2.5 Agriculture

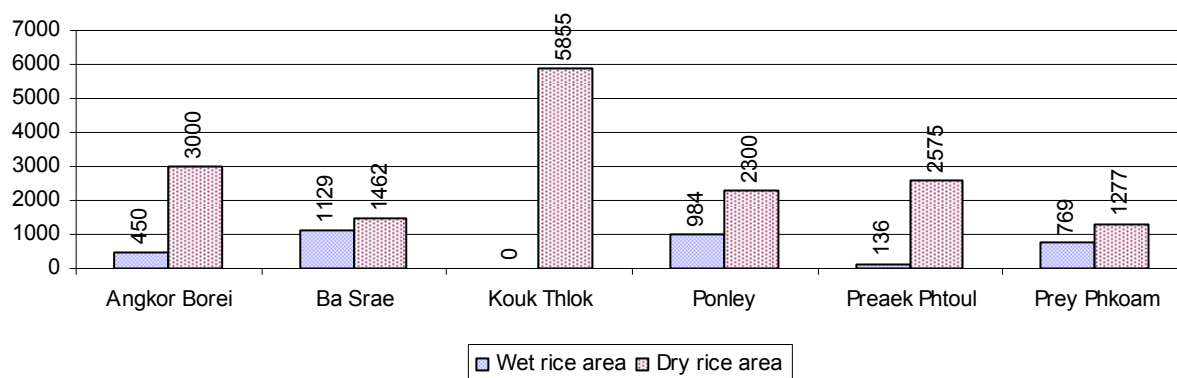
2.5.1 Rice cultivation in the District over 3 years

Description	2006	2007	2008
Total dry rice land area	19,367 ha	20,059 ha	19,209 ha
Actual dry rice cultivation area	20,367 ha	20,009 ha	16,469 ha
% actual cultivation to total land	105%	100%	86%
Total dry rice production	72,982 tonne(s)	79,036 tonne(s)	64,504 tonne(s)
Average dry rice yield	3.6 tonne(s)/ha	4.0 tonne(s)/ha	3.9 tonne(s)/ha
Total wet rice land area	3,771 ha	3,771 ha	3,868 ha
Actual wet rice cultivation area	3,771 ha	3,421 ha	3,468 ha
% actual cultivation to total land	100 %	91%	90%
Total wet rice production	10,181.70 tonne(s)	8,922.65 tonne(s)	9,710.40 tonne(s)
Average wet rice yield	2.7 tonne(s)/ha	2.6 tonne(s)/ha	2.8 tonne(s)/ha
Total intensive rice land area	7,397 ha	2,449 ha	2,787 ha
Actual intensive rice cultivation area	21,767 ha	6,551 ha	8,131 ha
Average intensive rice yield	2.9 tonne(s)/ha	2.6 tonne(s)/ha	2.9 tonne(s)/ha
Actual upland rice cultivation area	30 ha	29 ha	0 ha
Total upland rice production	105 tonne(s)	58 tonne(s)	- tonne(s)
Average upland rice yield	3.5 tonne(s)/ha	2.0 tonne(s)/ha	- tonne(s)/ha

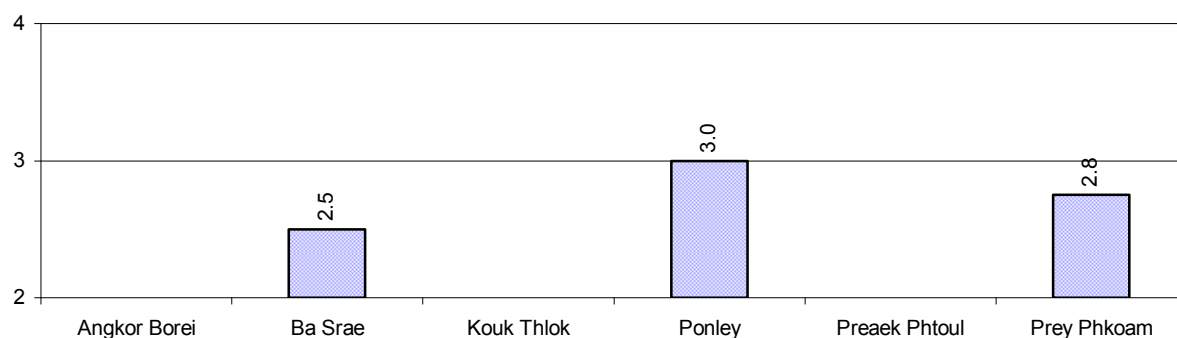
2.5.2 Estimated wet and dry Season Rice Yield in tonne(s)/Ha, by Commune, in 2008



2.5.3 Cultivated wet and dry Season Rice areas in Ha, by Commune, in 2008



2.5.4 Estimated intensive Rice Yields in tonnes/Ha, by Commune, for 2008



2.5.5 Estimated upland Rice Yield in tonnes/Ha, by Commune, for 2008

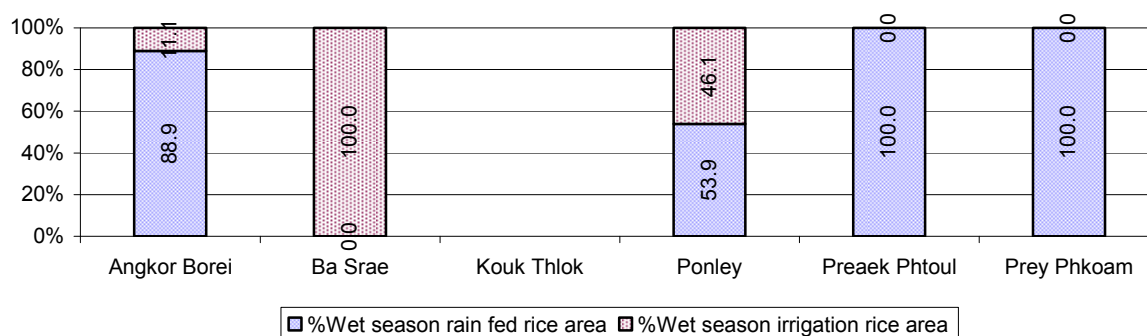
There were no estimated upland rice yields in this District in 2008

2.5.6 Wet season Rice irrigation across 3 years

Description		2006	2007	2008	
		%	%	%	Number
Total area of wet season rain fed rice land		44%	97%	53 %	1,835 ha
Percentage of wet season rice land that is irrigated; and for 2008 area in Ha		56 %	3 %	47 %	1,633 ha
Where	Area irrigated from canal/dam	3 %	0 %	8 %	137 ha
	Area irrigated from river, stream, lake, natural pond	19 %	87 %	14 %	225 ha
	Area irrigated from drilled well	12 %	7 %	78 %	1,271 ha
	Area irrigated from dug pond	67 %	6 %	0 %	0 ha

2.5.7 Water sources for wet Season Rice Cultivation, by Commune, in 2008

This chart shows the percentage of wet season rice cultivation receiving water from rain (natural) and from irrigation.



2.5.8 Access to Irrigation

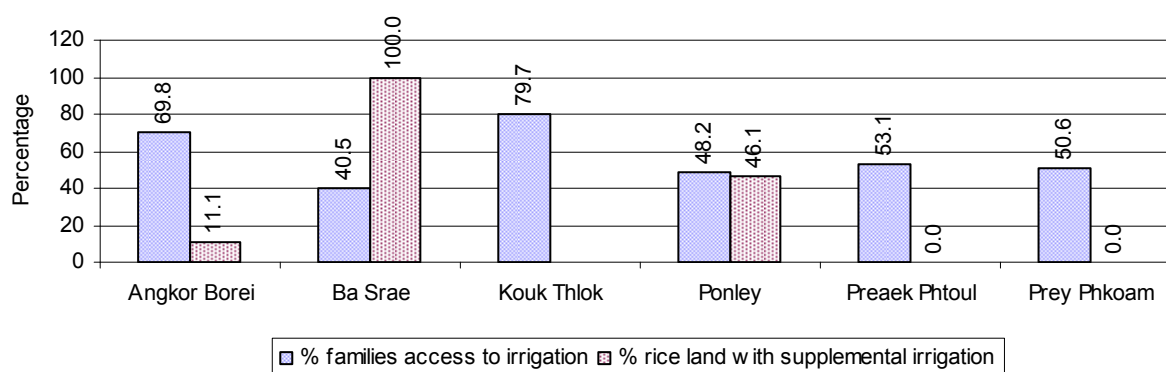
Description	2006 %	2007 %	2008	
			%	Number
Families who have access to irrigation water	67%	54%	55%	4,835 families
Families who have irrigation wells	4%	6%	6%	489 families

Note: Calculated against the total number of families are rice farmers

2.5.9 Number of Irrigation Wells over 3 years

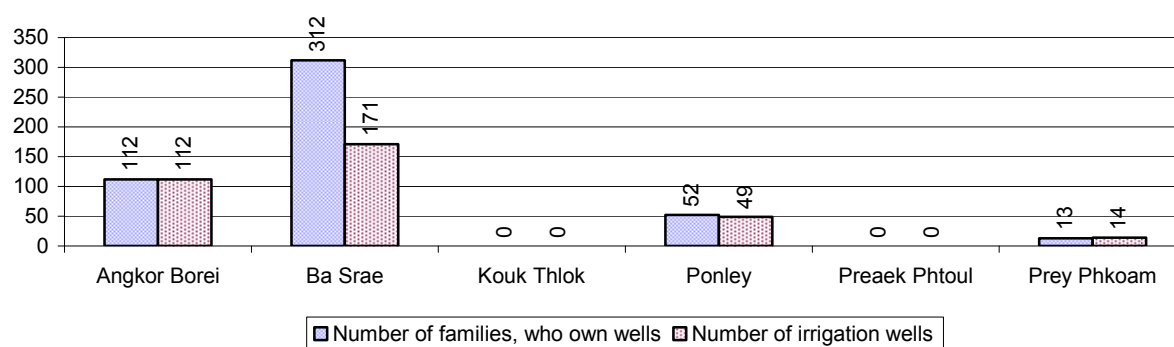
Description	2006	2007	2008
Number of irrigation wells	340 wells	330 wells	346 wells

2.5.10 Percentage of Families with access to (supplemental) Irrigation for wet Season Rice cultivation, by Commune, in 2008



Note: % of families, with access to irrigation is calculated against the total number of families, whose main occupation is rice farming. Irrigated wet rice land area is calculated against the total actual wet rice land cultivated areas

2.5.11 Irrigation Wells, by Commune, in 2008

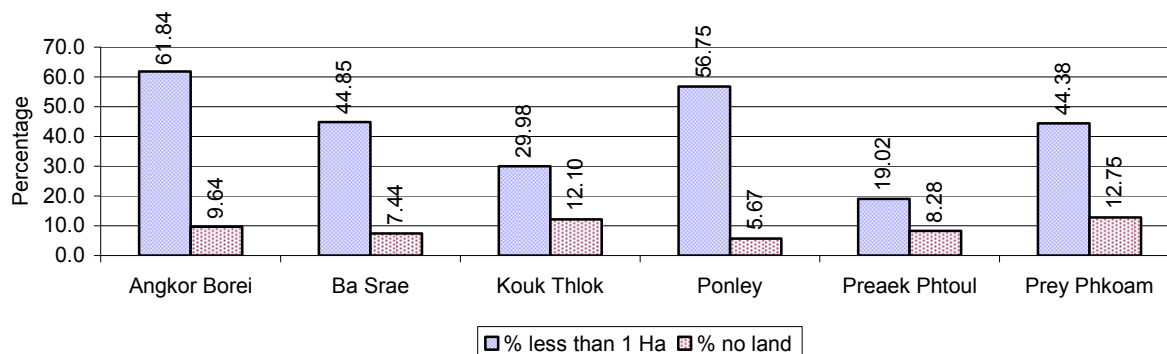


2.5.12 Farmers owning less than one hectare of Rice Land

Description	2006	2007	2008	
	%	%	%	Number
Families who have less than one hectare of rice land	47%	44%	47%	4,071 families
Families who do not own any rice land	8%	6%	9%	801 families

Note: Calculated on basis of total number of families who are rice farming

2.5.13 Percentage of Farmers with less than one Hectare or no Rice Land, by Commune, in 2008

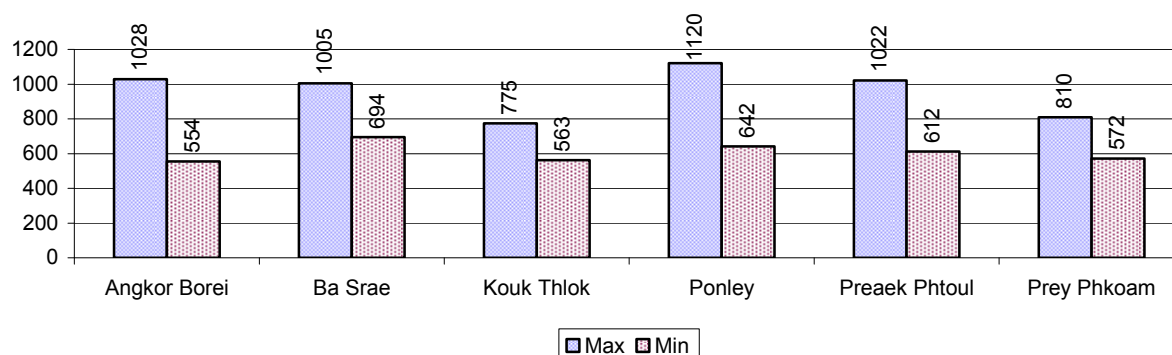


Note: Calculated on basis of total number of families who are rice farming

2.5.14 Average farm-gate Prices of Rice, over 3 years

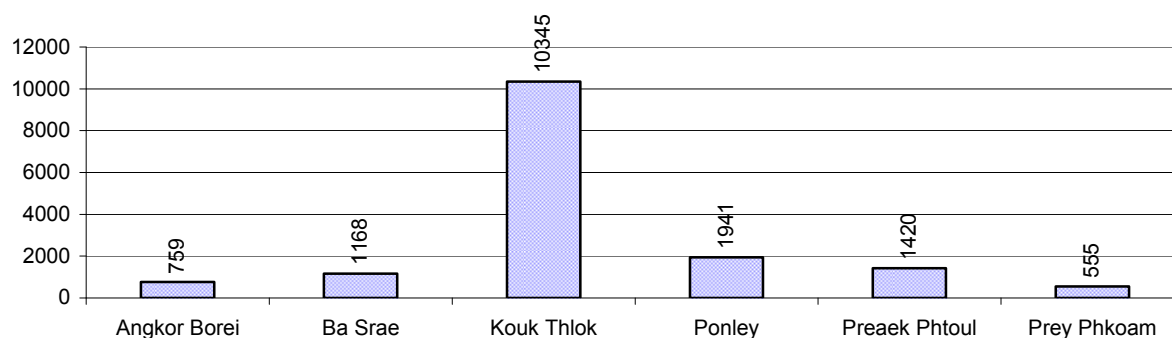
Description	2006	2007	2008
Maximum average farm gate price	570 Riels/Kg	757 Riels/Kg	960 Riels/Kg
Minimum average farm gate price	444 Riels/Kg	628 Riels/Kg	606 Riels/Kg
Average farm gate price	507 Riels/Kg	693 Riels/Kg	783 Riels/Kg
Average rice production per person	1,983 Kg/person	1,665 Kg/person	1,422 Kg/person

2.5.15 Minimum and maximum farm-gate Prices of Rice in Riel/kg, by Commune, in 2008



2.5.16 Production of Paddy in Kgs/Person, by Commune, in 2008

This table shows how much paddy (harvested rice) is produced in a year in a commune, in kgs per person.



2.5.17 Production of other Crops, over 3 years

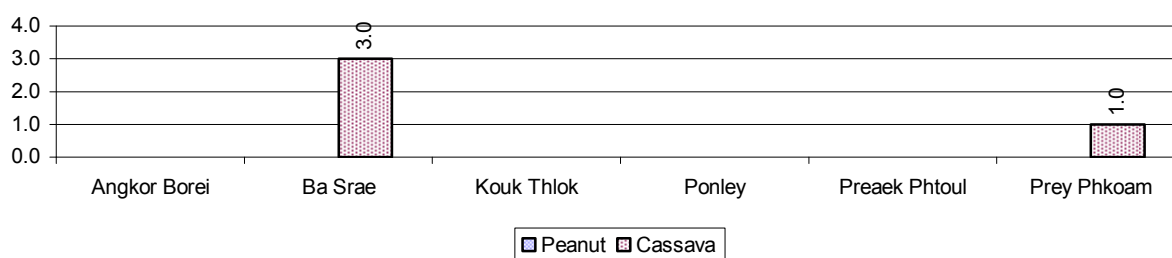
Crops	2006	2007	2008
Corn cultivation area	1 ha	0 ha	0 ha
Estimated corn yield	1.0 tonne(s)/ha	- tonne(s)/ha	- tonne(s)/ha
Estimated corn production	1 tonne(s)	- tonne(s)	- tonne(s)
Soya bean cultivation area	0 ha	0 ha	0 ha
Estimated Soya bean yield	- tonne(s)/ha	- tonne(s)/ha	- tonne(s)/ha
Estimated Soya bean production	- tonne(s)	- tonne(s)	- tonne(s)
Mungbean cultivation area	16 ha	16 ha	0 ha
Estimated Mungbean yield	1.2 tonne(s)/ha	1.2 tonne(s)/ha	- tonne(s)/ha
Estimated Mungbean production	19 tonne(s)	19 tonne(s)	- tonne(s)
Peanut cultivation area	0 ha	0 ha	0 ha
Estimated Peanut yield	- tonne(s)/ha	- tonne(s)/ha	- tonne(s)/ha
Estimated Peanut production	- tonne(s)	- tonne(s)	- tonne(s)
Cassava cultivation area	11 ha	14 ha	6 ha
Estimated Cassava yield	1.7 tonne(s)/ha	1.3 tonne(s)/ha	2.0 tonne(s)/ha
Estimated Cassava production	19 tonne(s)	18 tonne(s)	12 tonne(s)
Sweet potatoes cultivation area	0 ha	0 ha	0 ha

Crops	2006	2007	2008
Estimated Sweet potatoes yield	- tonne(s)/ha	- tonne(s)/ha	- tonne(s)/ha
Estimated Sweet potatoes production	- tonne(s)	- tonne(s)	- tonne(s)
Sesame cultivation area	0 ha	0 ha	0 ha
Estimated Sesame yield	- tonne(s)/ha	- tonne(s)/ha	- tonne(s)/ha
Estimated Sesame production	- tonne(s)	- tonne(s)	- tonne(s)

2.5.18 Yields of Corn, Soya beans and Mungbeans in tonne(s)/ha, by Commune, in 2008

There were no yields for any of these crops in this District in 2008

2.5.19 Yields of Peanuts and Cassava in tonne(s)/ha by Commune, in 2008



2.5.20 Yields of Sweet Potatoes and Sesame in tonne(s)/ha, by Commune, in 2008

There were no yields for any of these crops in this District in 2008

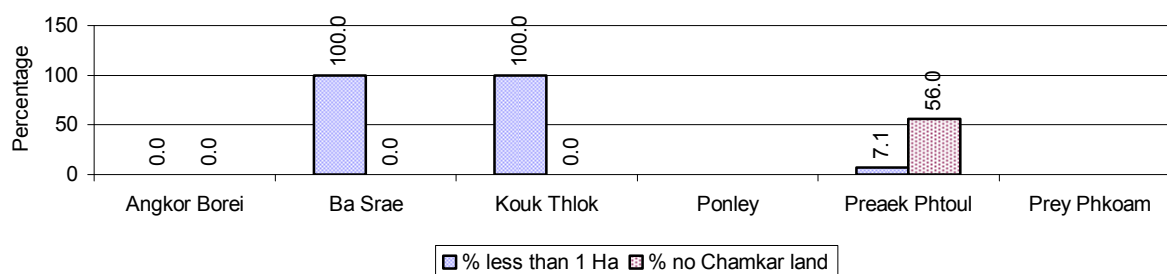
2.5.21 Percentage Farmers who own less than 1 Ha or no Chamkar land

Description	2006	2007	2008	
	%	%	%	Number
Families, who own less than 1ha of Chamkar land	0%	17%	20%	21 families
Families, with no Chamkar land	0%	3%	45%	47 families

Note 1: Calculated as a percentage of the total number of families whose main occupation is Chamkar (not rice) farming

Note 2: Chamkar land is no-rice land, i.e. other crops

2.5.22 Percentage Farmers owning less than 1 ha or no Chamkar land, by Commune, in 2008



Note: Percentage is calculated among families, who Chamkar farm as a main occupation, not the total population of the commune.

2.5.23 Percentage of Families raising Cattle/Buffalo, over 3 years

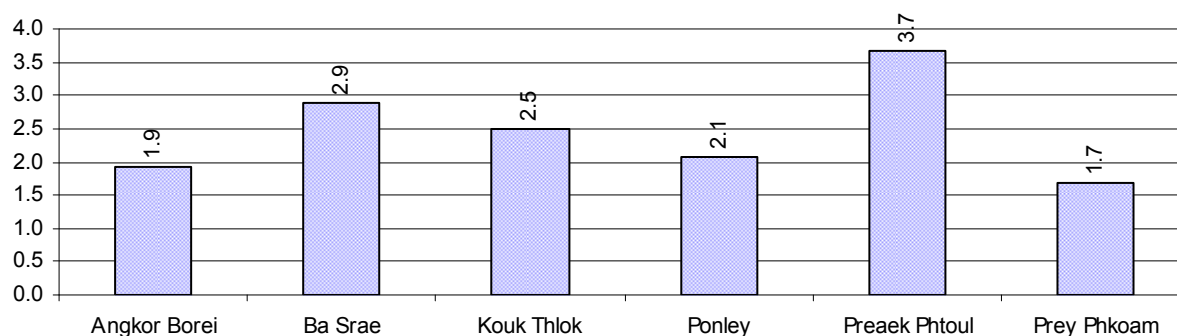
Description	2006 %	2007 %	2008	
			%	Number
Families raising cattle/buffalo	50%	55%	51%	4,913 families
Families raising cattle/buffalo as labor forces	28%	24%	22%	2,090 families

Note: Calculated against the total number of families.

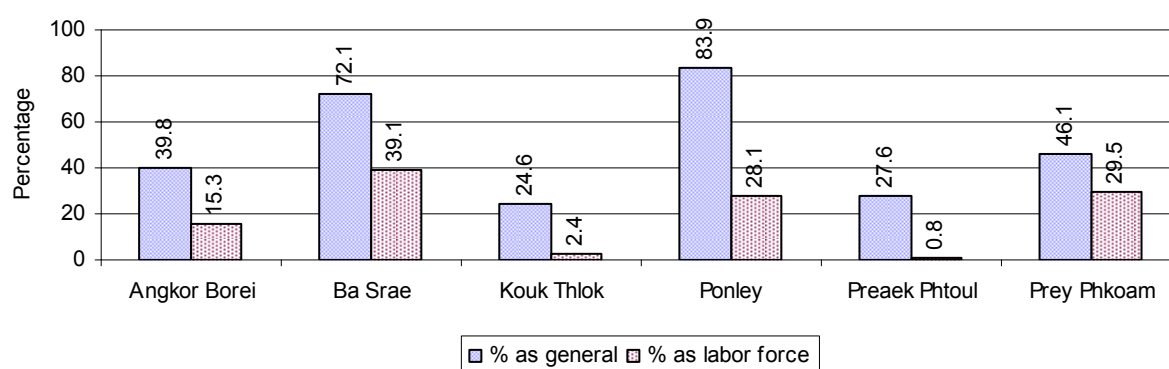
2.5.24 Number of Cattle/buffalo being raised, over 3 years

Description	2006	2007	2008
Total number of cattle/buffalo	9,429 head(s)	10,221 head(s)	11,561 head(s)
Average cattle/buffalo per families	2.1 head(s)/families	2.0 head(s)/families	2 head(s)/families

Note: Calculated by dividing total number of cattle/buffalo by total number of cattle/buffalo raising families

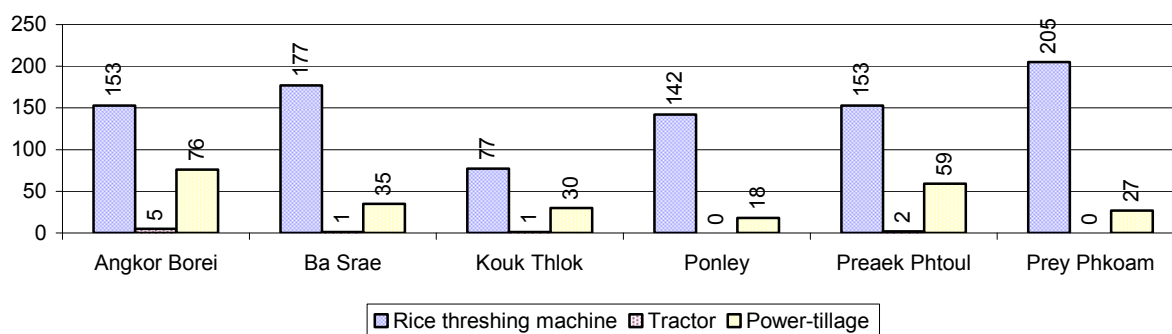
2.5.25 Average number of Cattle/Buffalo per Family, by Commune, in 2008

Note: Calculated by dividing total number of cattle/buffalo by total number of cattle/buffalo raising families

2.5.26 Percentage Families raising Cattle/Buffalo, for general and labor purposes in 2008, by Commune

Note: Calculated using the total number of families raising cattle/buffalo against the total number of families.

2.5.27 Type and number of agricultural Machines, by Commune, in 2008

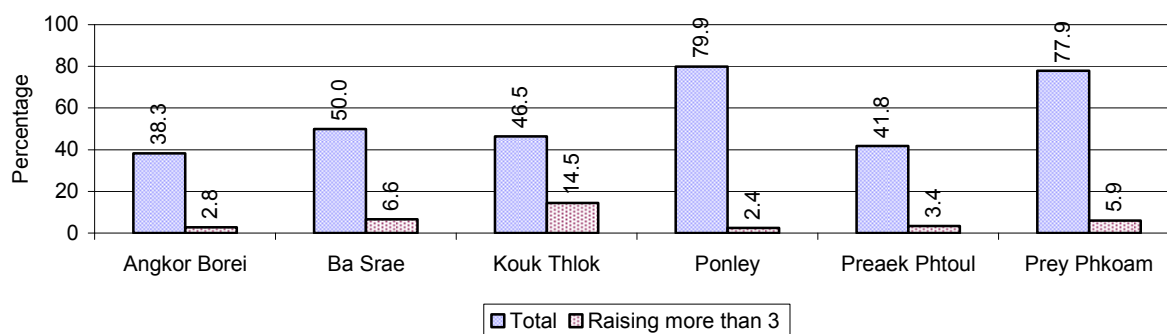


2.5.28 Livestock-producing Households over 3 years

Description	2006	2007	2008	
	%	%	%	Number
Total number of families raising pigs	69%	59%	55%	5,304 families
number of families raising more than 3 pigs	14%	8%	5%	474 families
Total number of families raising chickens	75%	76%	73%	7,039 families
number of families raising more than 3 chickens	42%	41%	42%	3,988 families
Total number of families raising ducks	8%	6%	7%	685 families
number of families raising more than 5 ducks	6%	4%	5%	495 families
Total number of families raising goats or sheep	0%	0%	0%	7 families
Total number of families raising horses	1%	1%	2%	152 families

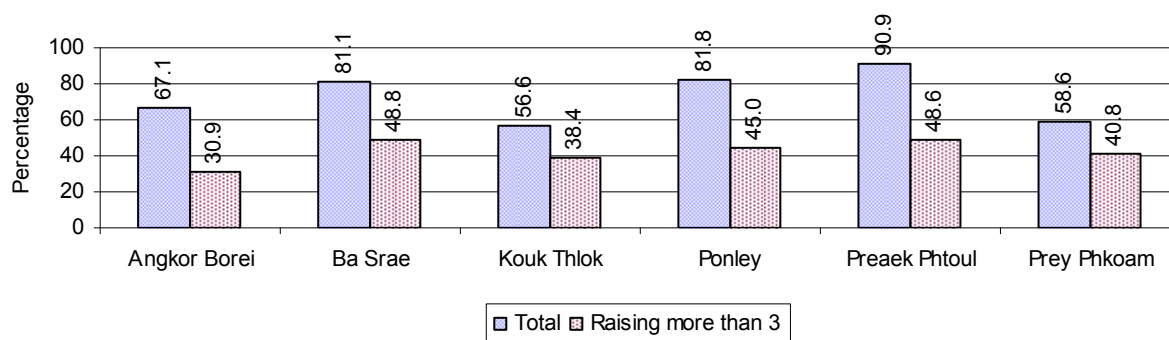
Note: Calculated against the total number of families

2.5.29 Percentage Families raising Pigs, by Commune, in 2008



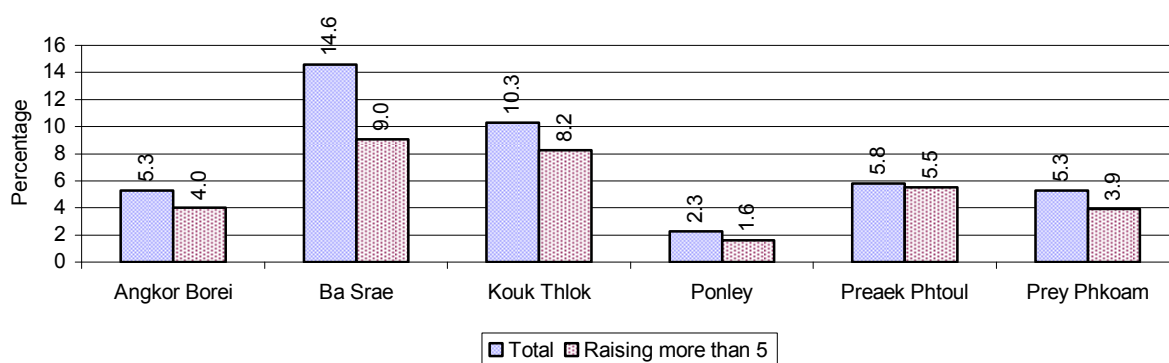
Note: Calculated against the total number of families in the commune

2.5.30 Percentage Families raising Chickens, by Commune, in 2008



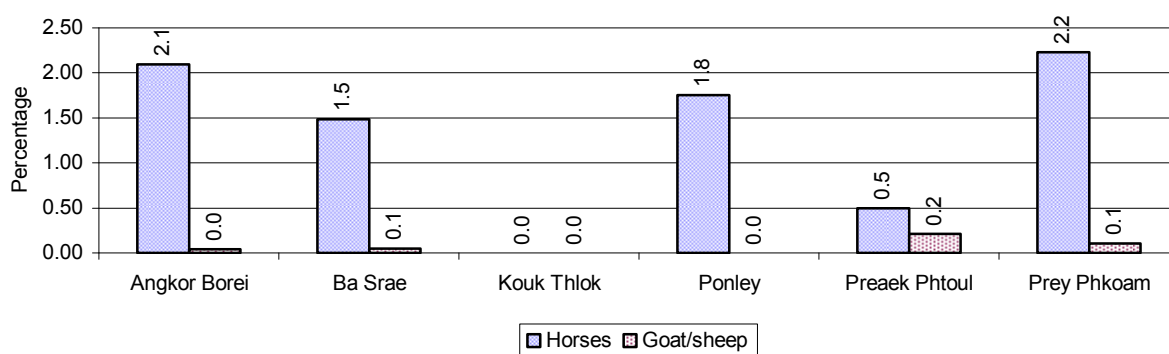
Note: Calculated against the total number of families in the commune

2.5.31 Percentage Families raising Ducks, by Commune, in 2008



Note: Calculated against the total number of families in the commune

2.5.32 Percentage Families raising Horses, Goats or Sheep, by Commune, in 2008



Note: Calculated against the total number of families in the commune

2.5.33 Livestock Farms over 3 years

Description	2006	2007	2008
Number of cattle/buffalo farms	0 farm(s)	0 farm(s)	0 farm(s)
Number of pig farms	0 farm(s)	0 farm(s)	0 farm(s)
Number of goat/sheep farms	1 farm(s)	0 farm(s)	0 farm(s)
Number of chicken farms	0 farm(s)	0 farm(s)	1 farm(s)
Number of duck farms	5 farm(s)	16 farm(s)	12 farm(s)

2.5.34 Number Livestock Farms, by Commune in 2008

There were no farms of this type in this District in 2008

Note: Number of farms are recorded by the village chief, not by counting number of livestock in each farm

2.5.35 Number Chicken and Duck Farms, by Commune, for 2008



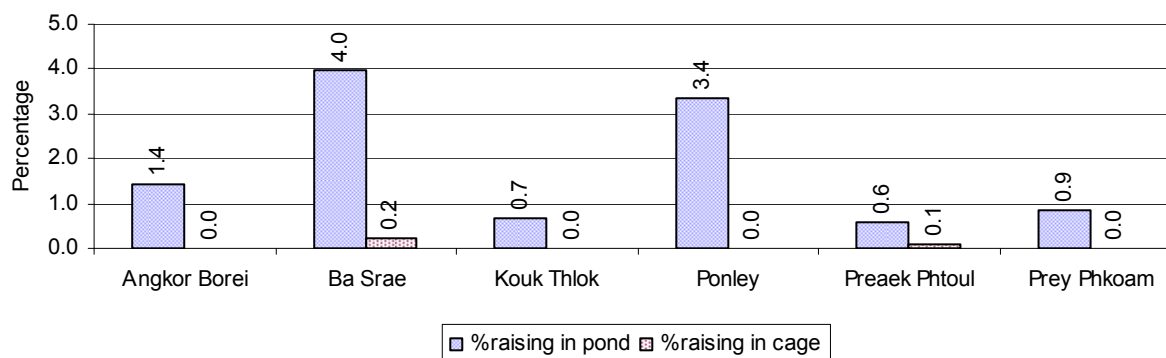
Note: Number of farm places recorded by village chief, not by counting number of livestock in each farm

2.5.36 Families raising Fish over 3 years

Description	2006	2007	2008
Total number of families raising fish	224 families	189 families	192 families
% families raising fish	2%	2%	2%
Number families raising fish in pond	217 families	187 families	187 families
% families raising fish in pond	2%	2 %	2%
Number fish pond	180 pond(s)	206 pond(s)	214 pond(s)
No. of ponds per family	0.8 pond/families	1.1 pond/families	1.1 pond/families
Number of families raising fish in cage	7 families	2 families	5 families
%families raising fish in cage	0 %	0 %	0%
Number of fish cage	7 cage(s)	2 cage(s)	5 cage(s)
No. of fish cage per family	1.0 cage /families	1.0 cage /families	1.0 cage /families

Note: % of families raising fish or fish in ponds or cages is calculated a percentage of the total number of families.

2.5.37 Percentage of Families raising Fish, by Commune, in 2008



Note: Calculated as a percentage of the total number of families in the commune.

2.5.38 Shrimp and Prawn Farming over 3 years

Description	2006	2007	2008
Number of families raising shrimps	0 families	0 families	0 families
% Families raising shrimps	0%	0%	0%
Number of shrimp ponds	0 pond	0 pond	0 pond
Total area raising shrimps	0 ha	0 ha	0 ha
Area per family	-ha/families	-ha/families	-ha/families
Number of families raising prawns	0 families	1 families	0 families
% families raising prawns	0%	0%	0%
Number prawn ponds	0 pond	3 pond	0 pond
Ponds per families	- pond/families	3pond/families	-pond/families
Number of prawn cages	0 cage	0 cage	0 cage
Cages per families	0 cage /families	0 cage /families	0 cage /families

Note: Percentage of families raising either prawns or shrimp is calculated against the number of families, who do aquaculture farming, NOT the total population.

2.5.39 Numbers of Families raising Shrimps and number of Shrimp Ponds, by Commune, in 2008

There were none of these in this District in 2008

2.5.40 Number of Families raising Prawn and Number of Prawn Ponds/Cages, by Commune, in 2008

There were none of these in this District in 2008

3 Social Aspects**3.1 Education****3.1.1 Kindergarten in the District over 3 years**

Description	2006	2007	2008
Number of community kindergarten schools	0 school(s)	0 school(s)	0 school(s)
Number of community kindergarten class rooms	0 room(s)	0 room(s)	0 room(s)
Number of community kindergarten classes	0 class(es)	0 class(es)	0 class(es)
Number of community kindergarten teachers	0 person(s)	0 person(s)	0 person(s)
Number of women community kindergarten teachers	0 women	0 women	0 women
Number of state and private kindergarten schools	4 school(s)	6 school(s)	6 school(s)
Number of state and private kindergarten class rooms	45 room(s)	9 room(s)	9 room(s)
Number of state and private kindergarten classes	7 class(e)s	9 class(es)	8 class(es)
Number of state and private kindergarten teachers	7 person(s)	9 person(s)	6 person(s)
Number of women state and private kindergarten teachers	7 women	8 women	5 women

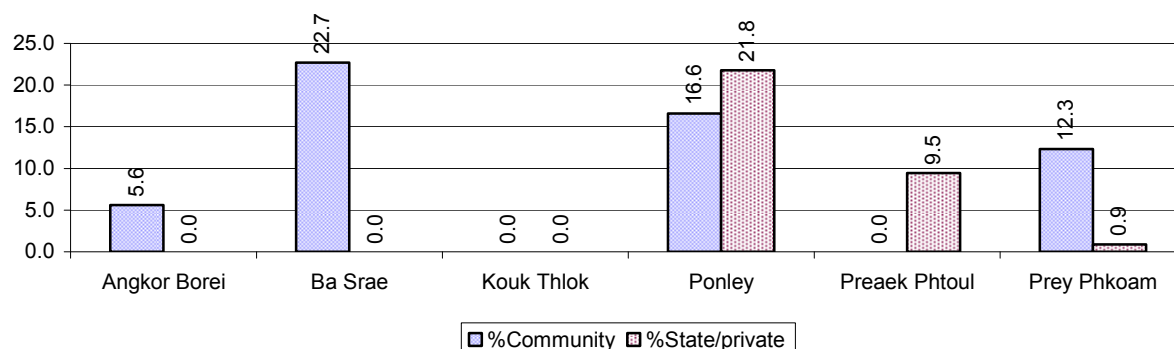
3.1.2 Percentage enrolment at Kindergarten level over 3 years

This table shows the percentage of the total 3-5 year old population attending kindergarten.

Description	2006	2007	2008	
	%	%	%	Number
Total percentage of children, 3-5 yrs, go to kindergarten	16%	17%	14%	816 person(s)
Percentage of children, 3-5 yrs, go community kindergarten	10%	7%	10%	606 person(s)
Percentage children, 3-5 yrs, go state/private kindergarten	6%	10%	3%	210 person(s)

Note: Calculated against the total for that age group

3.1.3 Percentage of Children 3-5 yrs attending Kindergarten, by Commune, in 2008



3.1.4 Basic Education over 3 years

Primary School

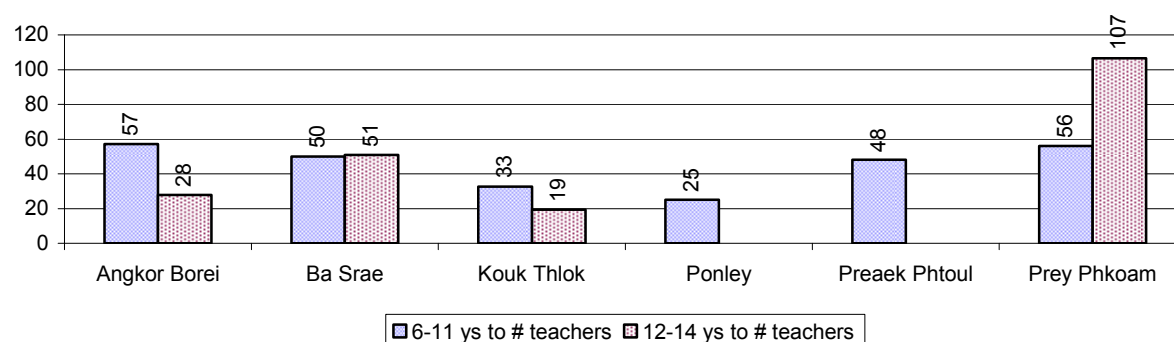
Description	2006	2007	2008
Number of primary schools	18 school(s)	18 school(s)	18 school(s)
Number of primary school rooms	184 room(s)	191 room(s)	199 room(s)
Number of primary classes	226 class(es)	230 class(es)	230 class(es)
Number of primary teachers	192 person(s)	183 person(s)	194 person(s)
Ratio of children 6-11 yrs to school	434	487	509
Ratio of children 6-11 yrs to school room	42	46	46
Ratio of children 6-11 yrs to class	35	38	40
Ratio of children 6-11 yrs to teacher	41	48	47

Note: According to education norm, children 6-11 yrs should attend primary school, while 12-14 yrs should be in lower secondary school, but in reality this varies.

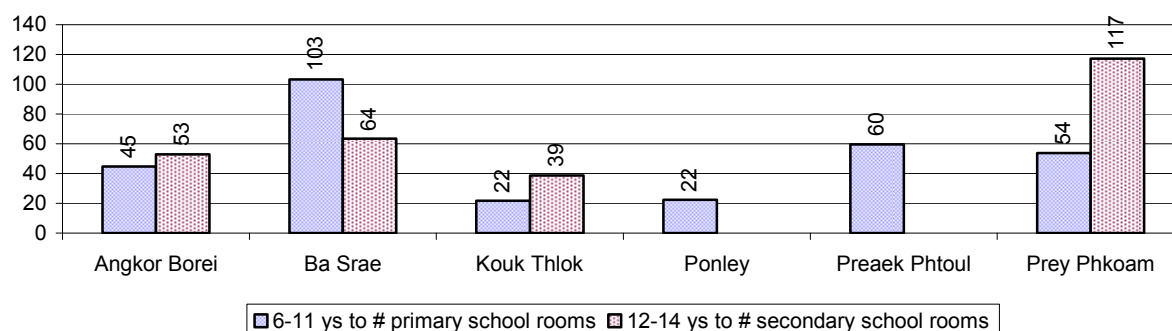
Lower Secondary School

Description	2006	2007	2008
Number of lower secondary schools	3 school(s)	4 school(s)	4 school(s)
Number of lower secondary school rooms	30 room(s)	47 room(s)	47 room(s)
Number of lower secondary classes	39 class(es)	42 class(es)	44 class(es)
Number of lower secondary teachers	52 person(s)	86 person(s)	74 person(s)
Ratio children 12-14 yrs to school	1,317	1,023	1,039
Ratio of children 12-14 yrs to school room	132	87	88
Ratio of children 12-14 yrs to class	101	97	94
Ratio of children 12-14 yrs to teacher	76	48	56

3.1.5 Ratio of 6-11 year old and 12-14 year old Children to number of Teachers, by Commune, in 2008



3.1.6 Ratio of 6-11 year old and 12-14 year old Children to number of School Rooms, by Commune, in 2008



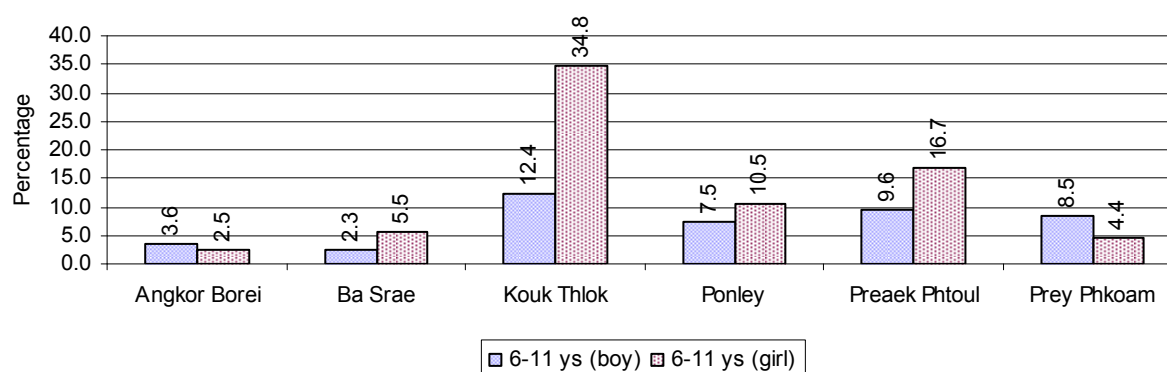
3.1.7 Enrolment status at Primary Level over 3 years

Description	2006 %	2007 %	2008	
			%	Number
Total children aged 6-11 years old	15%	15%	16%	9,156 person(s)
Total children aged 6-11 who are in school	91%	92%	93%	8,496 person(s)
Total children aged 6-11 who are not in school	9%	8%	7%	660 person(s)
Total girls aged 6-11 years old	14%	15%	15%	4,511 person(s)
Total girls aged 6-11 who are in school	92%	91%	92%	4,147 person(s)
Total girls aged 6-11 who are not in school	8%	9%	8%	364 person(s)
Total boys aged 6-11 years old	15%	16%	16%	4,645 person(s)
Total boys aged 6-11 who are in school	91%	94%	94%	4,349 person(s)
Total boys aged 6-11 who are not in school	9%	6%	6%	296 person(s)

Note 1: Percentage is calculated on the basis of the total number of children within 6-11 year age group for the first 3 rows and for the total girls and the total boys aged 6-11 yrs.

Note 2: Number of girls aged 6-11 who are in & not in school is calculated against the total number of girls aged 6-11 yrs. Number boys, 6-11 yrs who are in & not in school are calculated against the total number of boys aged 6-11 yrs.

3.1.8 Percentage of 6-11 year old Children not in School, by Commune, in 2008



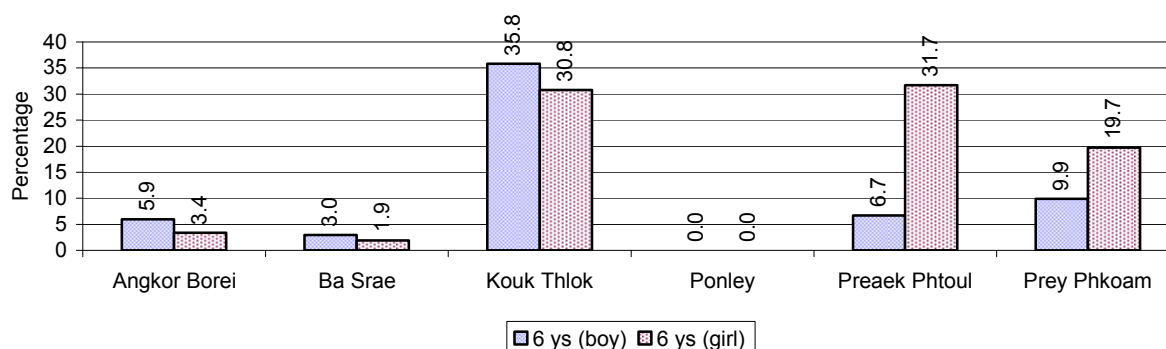
Note: calculated on the basis of the total number of children within 6-11 year age group in the commune.

3.1.9 Enrolment of 6 year old Children over 3 years

Description	2006 %	2007 %	2008	
			%	Number
Total % and number of children aged 6 years old	6%	6%	7%	3,893 person(s)
Total % of children aged 6 years old in school	91%	94%	91%	3,554 person(s)
Total % of children aged 6 years old not in school	9%	6%	9%	339 person(s)

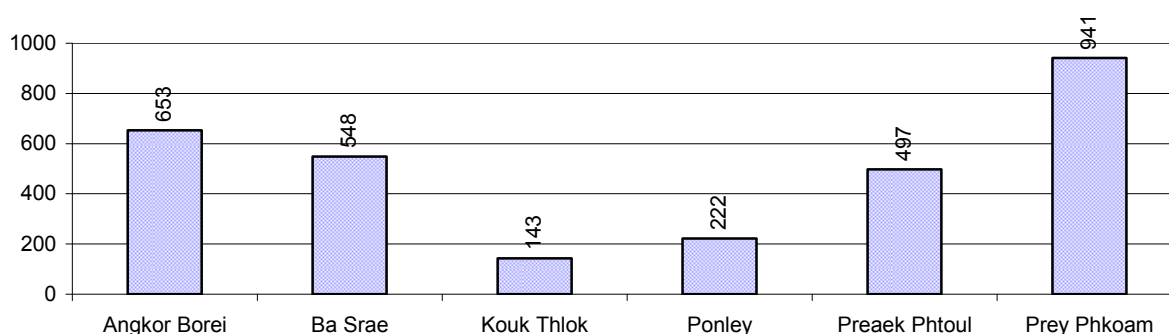
Note: First row calculated as a percentage of total population. Second and third row calculated as a percentage of the total number of 6 year olds.

3.1.10 Percentage of 6 year old Children not in School, by Commune, in 2008



Note: Calculated as a percentage of total 6 year old population

3.1.11 Number of 5 year old Children in each Commune in 2008

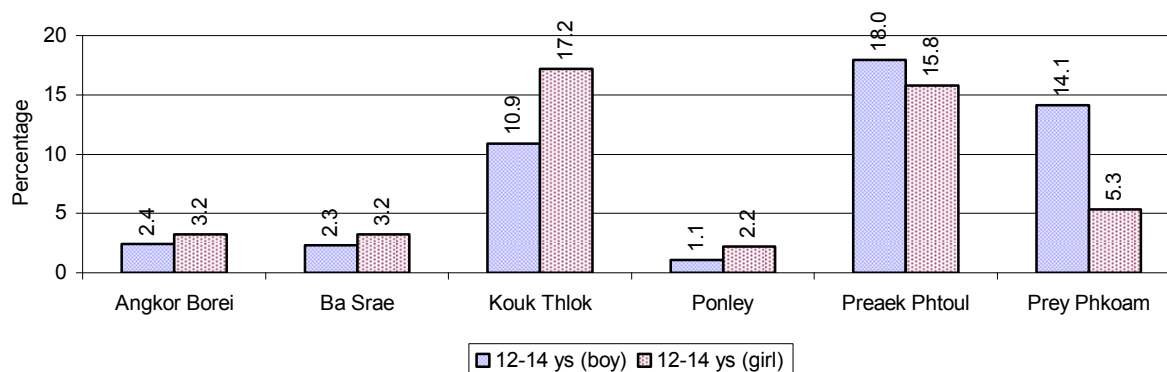


3.1.12 Enrolment at Lower Secondary Level over 3 years

Description	2006 %	2007 %	2008	
			%	Number
Total children aged 12-14 years old	7%	7%	7%	4,154 person(s)
Children aged 12-14 years old in school	91%	92%	93%	3,856 person(s)
Children aged 12-14 years old not in school	9%	8%	7%	298 person(s)
Total girls aged 12-14 years old	7%	7%	7%	2,074 person(s)
Girls aged 12-14 years old in school	92%	91%	94%	1,945 person(s)
Girls aged 12-14 years old not in school	8%	9%	6%	129 person(s)
Total boys aged 12-14 years old	8%	7%	7%	2,080 person(s)
Boys aged 12-14 years old in school	91%	93%	92%	1,911 person(s)
Boys aged 12-14 years old not in school	9%	7%	8%	169 person(s)

Note: Percentage is calculated on the basis of number of the total number of children within 12-14 yrs group, except for the first row of each section which is calculated on the basis of the total population.

3.1.13 Percentage of 12-14 year olds not in School, by Commune, in 2008



Note: Calculated as a percentage of the total 12-14 year old population in each commune

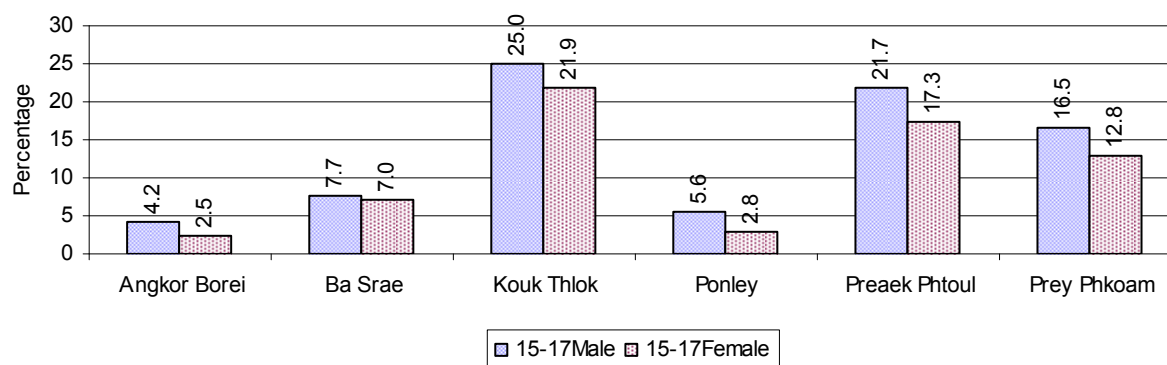
3.1.14 Upper Secondary Schools over 3 years

Description	2006	2007	2008
Number of upper secondary schools	2 school(s)	2 school(s)	2 school(s)
Number of upper secondary school rooms	33 room(s)	33 room(s)	32 room(s)
Number of upper secondary classes	27 class(es)	27 class(es)	32 class(es)
Number of upper secondary teachers	32 person(s)	14 person(s)	45 person(s)
Ratio of 15-17 yr olds to number of school	2,411	2,134	2,135
Ratio of 15-17 yr olds to number of school room	146	129	133
Ratio of 15-17 yr olds to number of classes	179	158	133
Ratio of 15-17 yr olds to number of teacher	151	305	95

3.1.15 Enrolment of 15-17 year old teenagers over 3 years

Description	2006	2007	2008
Number of teenage, 15-17 years old	4,822 person(s)	4,267 person(s)	4,270 person(s)
Number of teenage, 15-17 years old, who are not studying	709 person(s)	367 person(s)	444 person(s)
Percentage of teenage, 15-17 years old not studying	15%	9%	10%

3.1.16 Percentage of 15-17 year old Teenagers not at School, by Commune, in 2008



3.1.17 Literacy Classes as of 2008

Literacy classes	Organized by:		Other Program(s)	Total
	PDoEYS	NGOs		
Number of On-going literacy classes	0 class(es)	0 class(es)	0 class(es)	0 class(es)
Number of literacy students in on-going classes	0 person(s)	0 person(s)	0 person(s)	0 person(s)
Completed literacy class(es)	0 classes	0 classes	0 classes	0 classes
Number of literacy students that have completed literacy classes	0 person(s)	0 person(s)	0 person(s)	0 person(s)
Number of students that passed	0 person(s)	0 person(s)	0 person(s)	0 person(s)

3.1.18 Number of on-going and completed Literacy Classes, by Commune, in 2008

There were no classes in this District in 2008

3.1.19 Students of on-going & completed Literacy Classes, by Commune, in 2008

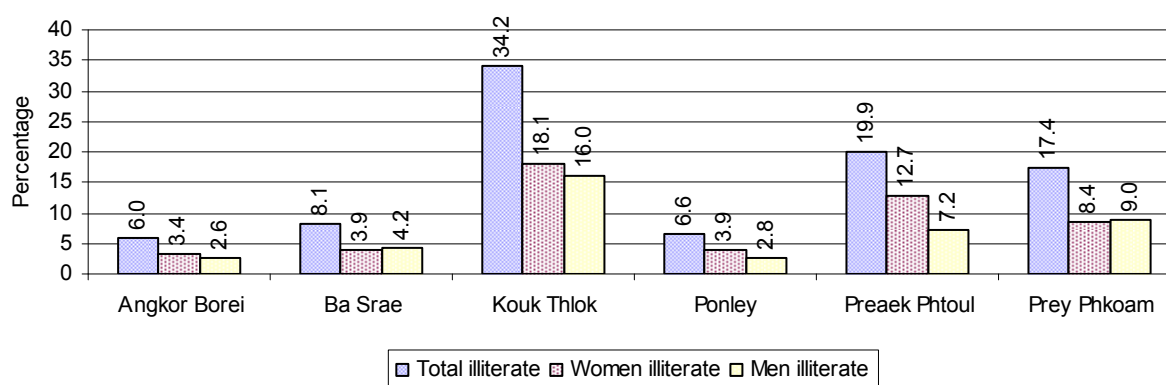
There were no students who had taken or were taking literacy classes in this District in 2008

3.1.20 Percentage of illiterate People between 15-60, over 3 years

Illiteracy Status	2006 %	2007 %	2008	
			%	Number
Illiterate people, 15-60 years old	12%	16%	12%	3,912 person(s)
Illiterate females, 15-60 years old	7%	8%	7%	2,123 person(s)
Illiterate people, 15-17 years old	6%	4%	4%	175 person(s)
Illiterate females, 15-17 years old	3%	2%	2%	72 person(s)
Illiterate people, 18-24 years old	8%	6%	8%	577 person(s)
Illiterate females, 18-24 years old	5%	3%	4%	283 person(s)
Illiterate people, 25-60 years old	15%	21%	15%	3,160 person(s)
Illiterate females, 25-60 years old	8%	11%	9%	1,768 person(s)

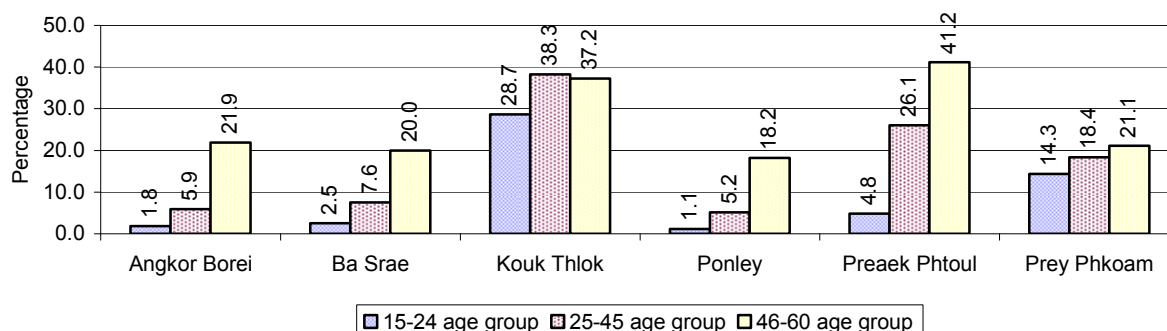
Note: Percentage is calculated on the basis of number of people in age each group.

3.1.21 Percentage illiterate People among 15-60 yrs old, by Commune, in 2008



Note: Percentages are calculated on the basis of number of people in that age group.

3.1.22 Percentage illiterate People for 15-24 yrs, 25-45 yrs and 46-60 yrs, by Commune, in 2008



Note: Percentage of illiterate people in each age group is calculated on the basis of number of people in that age group.

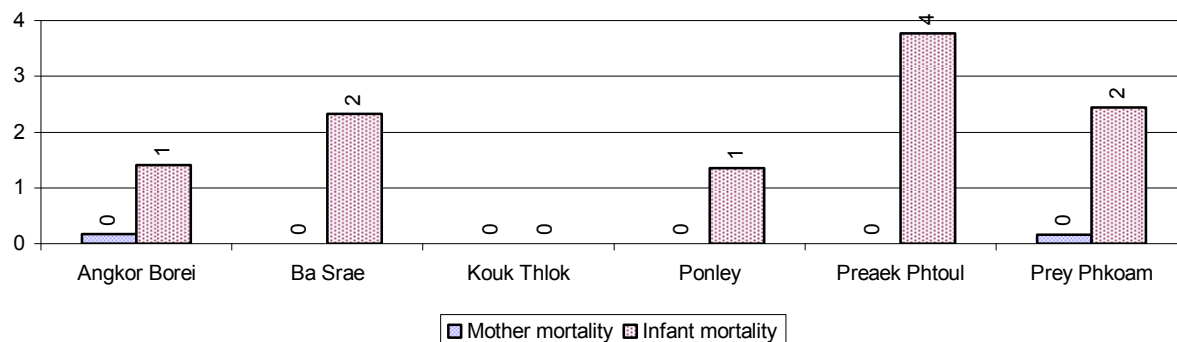
3.2 Health

3.2.1 Health Situation of Women and Children, over 3 years

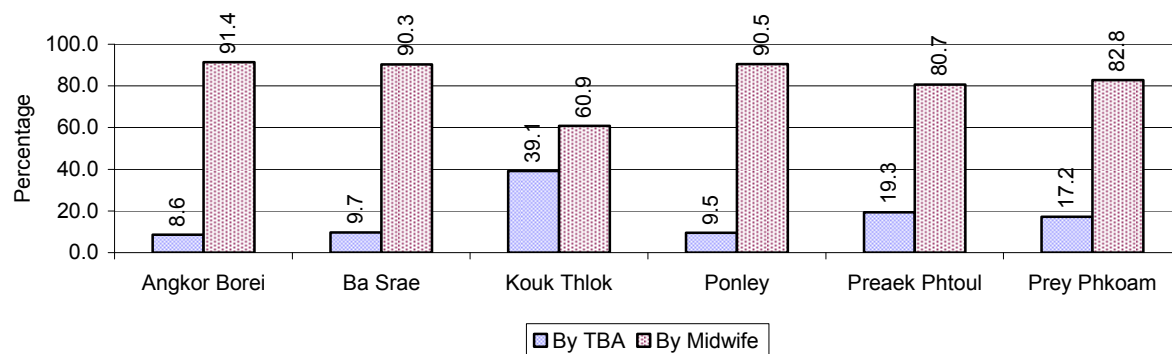
Description	2006	2007	2008
Number families with a birth during the year	564 families	611 families	555 families
Number of women who had their baby delivered by a TBA	277 person(s)	130 person(s)	71 person(s)
Percentage of women who had their baby delivered by a TBA	49 %	21 %	13 %
Number of women who had their baby delivered by a midwife	287 person(s)	481 person(s)	484 person(s)
Percentage of women had their baby delivered by a midwife	51 %	79 %	87 %
Number of mothers who died within 1 month of giving birth	3 person(s)	3 person(s)	5 person(s)
Mothers who died within 1 month of giving birth per 100,000 families having a delivery	532	491	901
Number of infants born during the year	564 person(s)	611 person(s)	558 person(s)
Number of Infants who died within 1 month	15 person(s)	8 person(s)	9 person(s)
Infants mortality within 1 month per 1,000 births	27	13	16
Number of children who died below the age of 5.	15 person(s)	59 person(s)	22 person(s)
Number of infants, aged 9-12 months, born during the year	357 person(s)	447 person(s)	452 person(s)
Nr. infants, aged 9-12 months, not receiving full immunization	24 person(s)	24 person(s)	12 person(s)
% of 9-12 months infants, not receiving full immunization	7 %	5 %	3 %

Note: TBA = Traditional Birth Attendant

3.2.2 Mothers dying within 0 days to 1 month of giving Birth and Infants dying within 1 month in 2008, by Commune

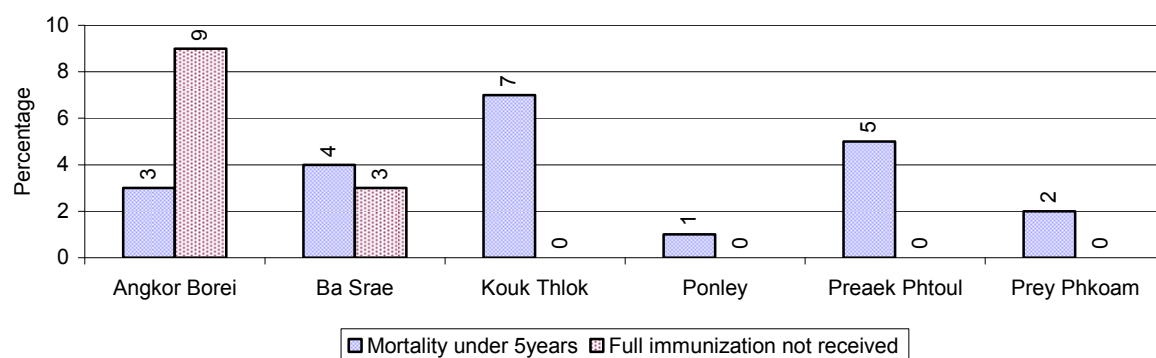


3.2.3 Percentage of Women delivering with a TBA or Midwife, by Commune



Note: Calculated as a percentage of total deliveries

3.2.4 Percentage of Children dying below 5 & of 9-12 months not receiving full Immunization, by Commune, in 2008



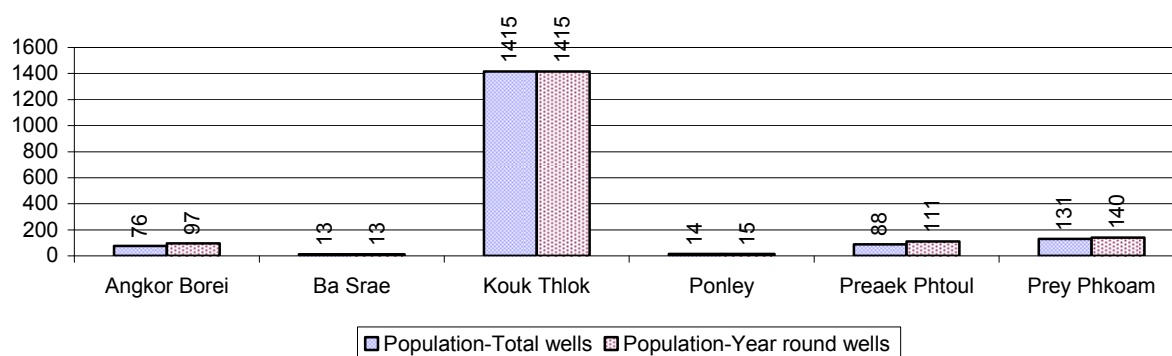
Note: Mortality rate calculated as a percentage of the total 5 year old population. Lack of immunization received calculated as a percentage of the total number 9-12 months olds there are

3.3 Water and Sanitation

3.3.1 Number of different types of Wells over 3 years

Type of wells	Number of wells by year		
	2006	2007	2008
<i>Total number of pumped or mixed wells</i>	1,619	1,614	1,714
Year-round usable pumped or mixed wells	1,465	1,546	1,628
Dry season unusable pump or mixed wells	154	68	86
Pump or mixed wells needing repair/rehabilitation	172	218	190
<i>Total number of ring wells</i>	60	37	38
Year-round usable ring wells	47	29	26
Dry season unusable ring wells	13	8	12
Ring wells needing repair/rehabilitation	14	12	18
<i>Total number of unprotected dug wells</i>	93	83	168
Year-round usable unprotected dug wells	71	68	153
Dry season unusable unprotected dug wells	22	15	15

3.3.2 Ratio of People to Wells, by Commune, in 2008

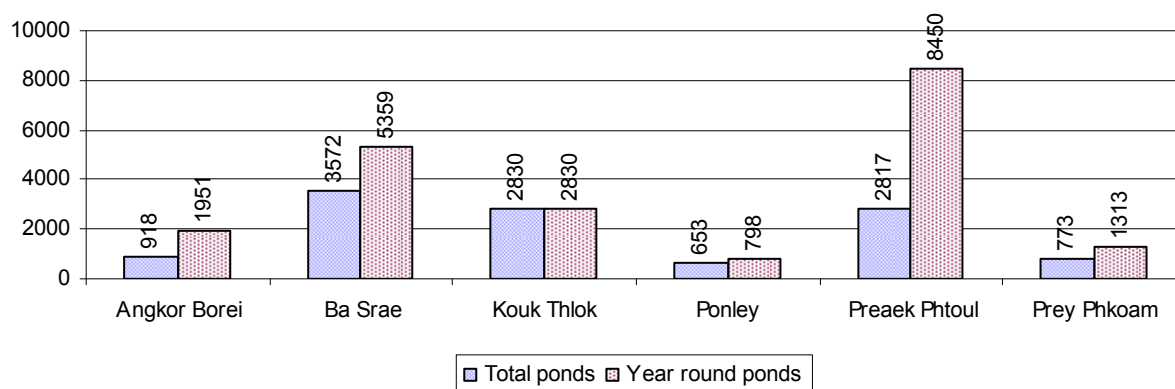


Note: Year-round wells excluding unprotected wells

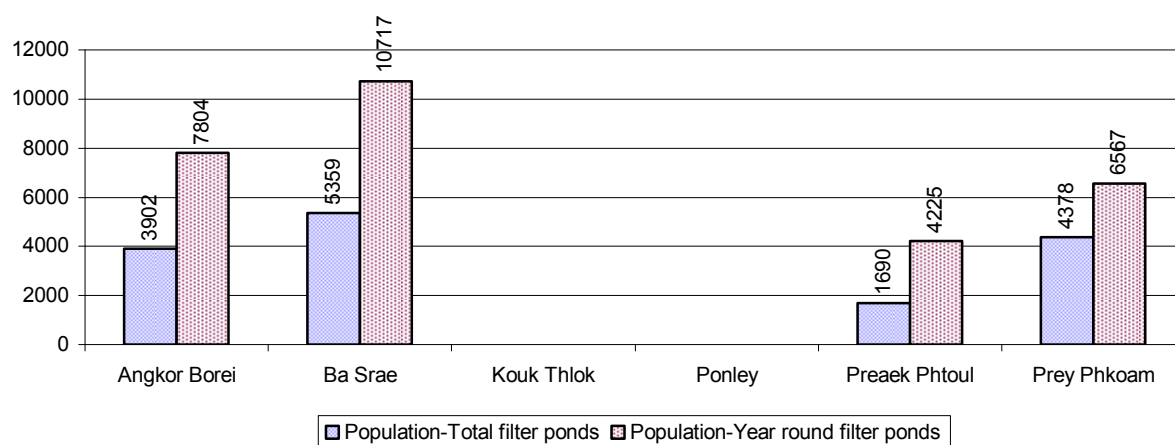
3.3.3 Potable Ponds over 3 years

Type of Pond	2006	2007	2008
<i>Total number of normal-type ponds</i>	41 pond	85 pond	52 pond
Year-round usable normal-type ponds	25 pond	36 pond	31 pond
Dry season unusable normal-type ponds	16 pond	49 pond	21 pond
Normal-type ponds needing repair/rehabilitation	23 pond	32 pond	28 pond
<i>Total number of filter ponds</i>	16 pond	8 pond	14 pond
Year-round usable filter ponds	7 pond	2 pond	7 pond
Filter ponds, dry season unusable	9 pond	6 pond	7 pond
Filter ponds needing repair/rehabilitate	9 pond	7 pond	9 pond

3.3.4 Ratio of People to normal Ponds, by Commune in 2008



3.3.5 Ratio of People to Filter Ponds, by Commune, in 2008

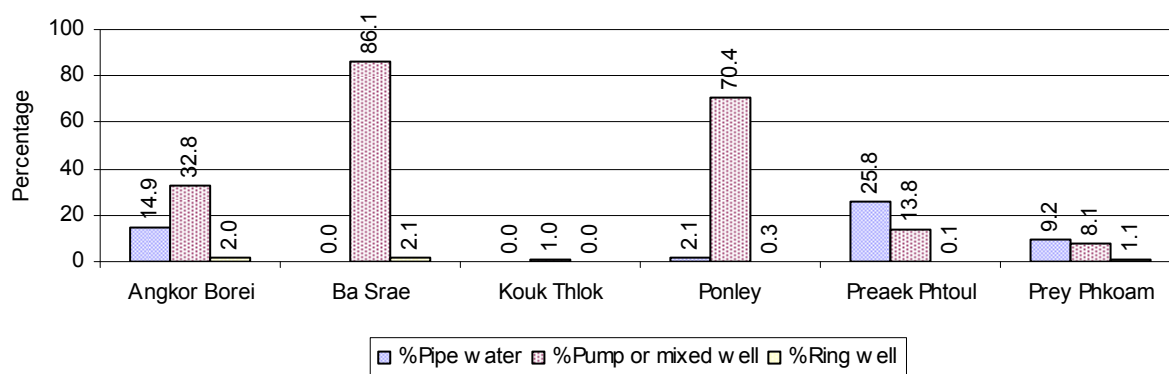


3.3.6 Source of potable Water for Households, over 3 years

Water sources	2006 %	2007 %	2008	
			%	Number
Families using water from purification system	10%	10 %	10 %	926 families
Families using water from pump, mixed wells	32%	37 %	40 %	3,798 families
Families using water from ring wells and open dug wells	6%	2 %	1 %	117 families
Families using water from pond	22%	22 %	19 %	1,834 families
Families using water from rain water storage	2%	1 %	2 %	167 families
Families using water from rivers, lakes, natural ponds and reservoirs	29%	29 %	29 %	2,765 families

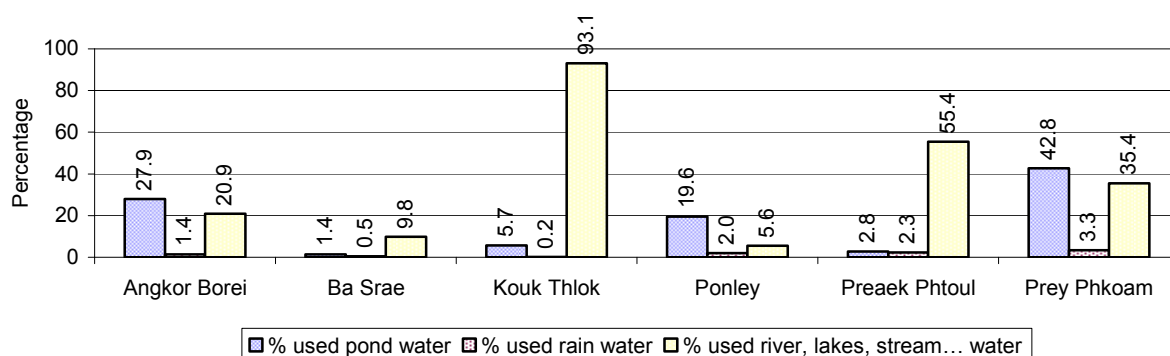
Note: Calculated as a percentage of the total number of families.

3.3.7 Percentage Families using different Water Sources, by Commune, in 2008



Note: Calculated as a percentage of the total number of families in each commune

3.3.8 Percentage Families using Water from Rain Water Storage, Ponds and natural Sources (rivers/lakes/natural ponds/reservoirs), by Commune, 2008



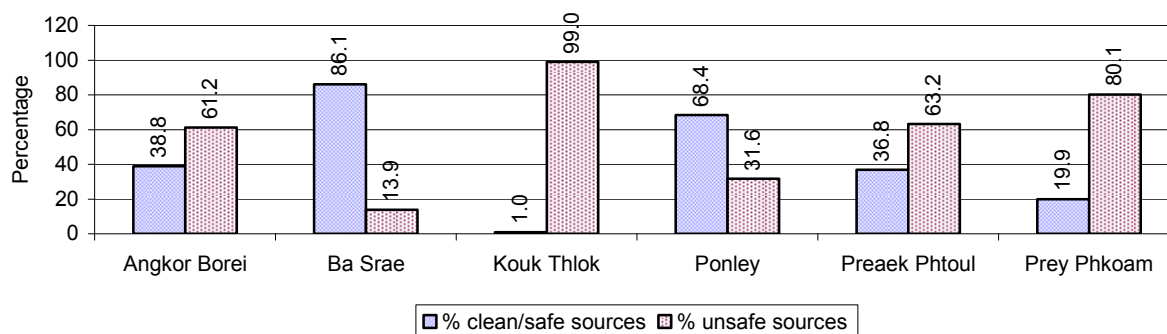
Note: Calculated as a percentage of the total number of families in each commune

3.3.9 Drinking Water Sources in the dry Season over 3 years

Percentage Families that get drinking water from:	2006	2007	2008	
	%	%	%	Number
from clean/safe sources	39 %	43 %	46 %	4,459 families
from unsafe sources	61 %	57 %	54 %	5,148 families

Note: Calculated as a percentage of the total number of families.

3.3.10 Percentage Families using safe and unsafe Water Sources in the dry Season, by Commune, in 2008



Note: Calculated as a percentage of the total number of families in each commune.

3.3.11 Drinking Water Purification by Households, over 3 years

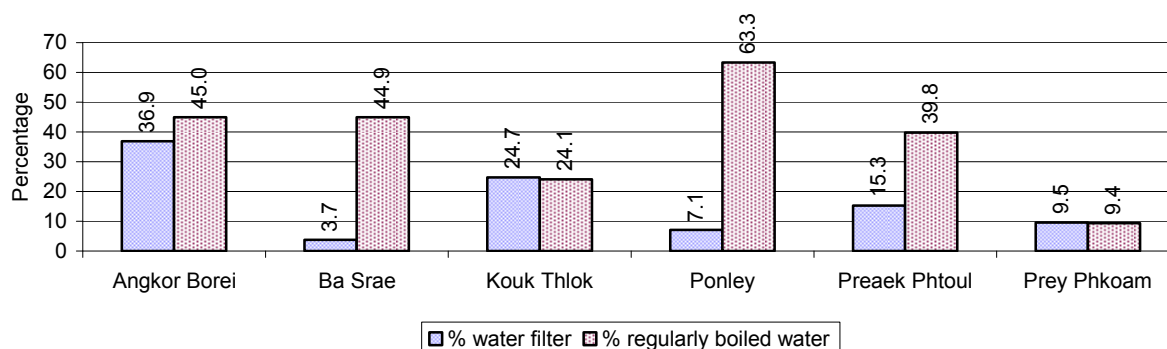
This table shows the different ways families make water safe for drinking.

Families, who:	2006	2007	2008	
	%	%	%	Number
Filter water for drinking	10%	15%	17 %	1,606 families
Boil water for drinking	30%	42%	39 %	3,719 families

Note: Calculated as a percentage of the total number of families

3.3.12 Percentage Families filtering Water or regularly boiling Water, by Commune, in 2008

This graph shows the different ways families make drinking water safe.



Note: Calculated on as a percentage of the total number of families in each commune.

3.3.13 Families' access to Water, over 3 years

Families access to water	2006	2007	2008	
	%	%	%	Number
Families with water at home or in less than 150m	33%	34%	22 %	2,098 families
Families with water 150m or more away from home	17%	7%	13 %	1,256 families

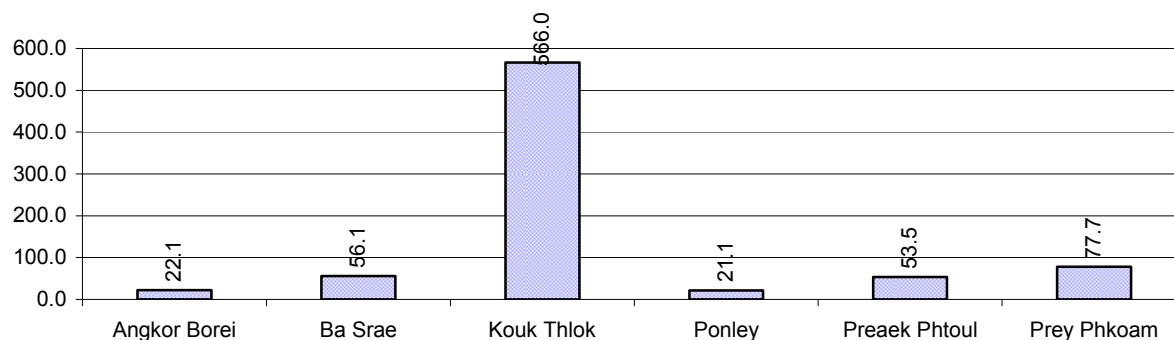
Note: Calculated as a percentage of the total number of families

3.3.14 Ratio of people to Latrines over 3 years

Description	2006 Ratio	2007 Ratio	2008	
			Ratio	Number
Ratio of people to latrines	38.8	43.1	36.9	1,569.0

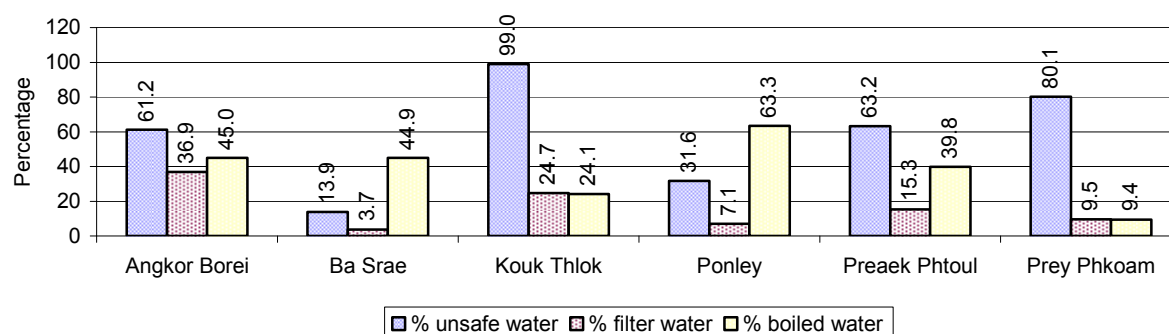
Note: Ratio calculated by dividing the number of houses with latrines by the total population

3.3.15 Ratio of People to Latrines, by Commune, in 2008



Note: Ratio calculated by dividing the number of houses with latrines by the total population in a Commune.

3.3.16 Percentage of Families drinking boiled, filtered or unsafe Water, by Commune, in 2008



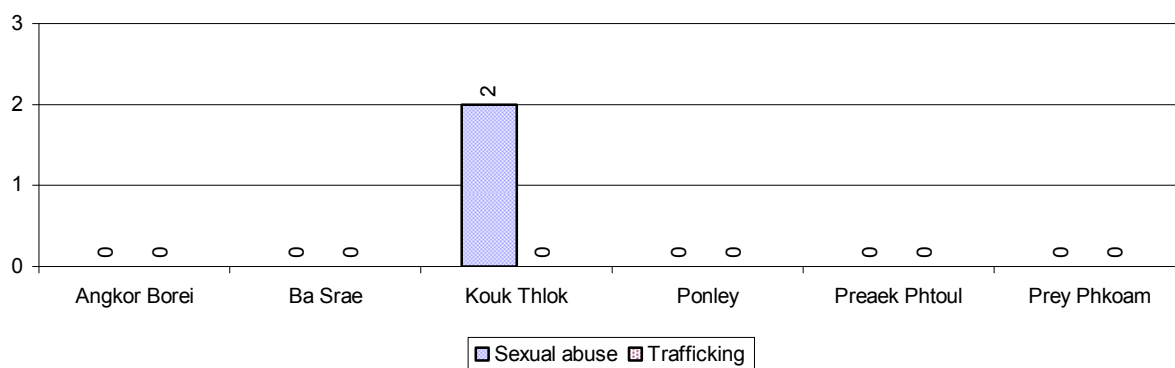
Note: Calculated as a percentage of the total number of families in each commune.

3.4 Vulnerable groups

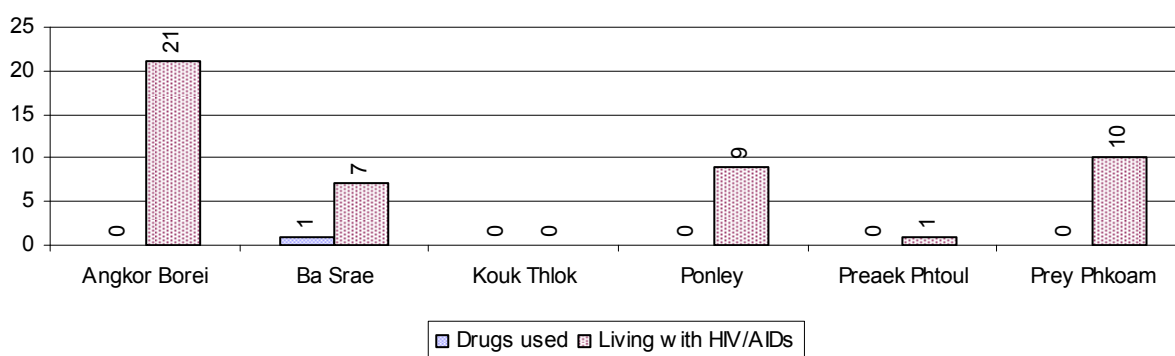
3.4.1 Vulnerable Groups in need of special Protection over 3 years

Vulnerable groups	2006	2007	2008
Victims of sexual abuse	2 person(s)	2 person(s)	2 person(s)
Victims of human trafficking	0 person(s)	0 person(s)	0 person(s)
Families with family member(s) using drugs	5 families	0 families	1 families
Families with family member(s) living with HIV/AIDS	38 families	45 families	48 families
Children under 18 yrs old whose parent died of AIDS	34 person(s)	65 person(s)	67 person(s)
Orphaned/abandoned children under 18 yrs old (all cases)	148 person(s)	189 person(s)	187 person(s)
Elderly persons without guardian	62 person(s)	311 person(s)	81 person(s)
Disabled people able to earn an income	41 person(s)	29 person(s)	24 person(s)
Disabled people unable to earn an income	63 person(s)	42 person(s)	68 person(s)
Disabled people under 18 yrs old	22 person(s)	22 person(s)	42 person(s)
Victims of natural disasters	351 families	10 families	16 families
Victims of land mines and unexploded weapons	5 person(s)	5 person(s)	3 person(s)

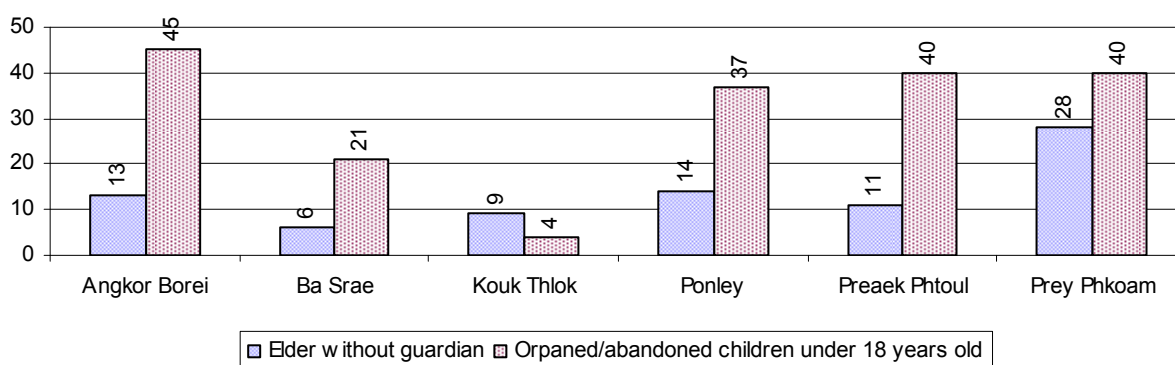
3.4.2 Registered Victims of sexual Abuse or Trafficking, by Commune, for 2008



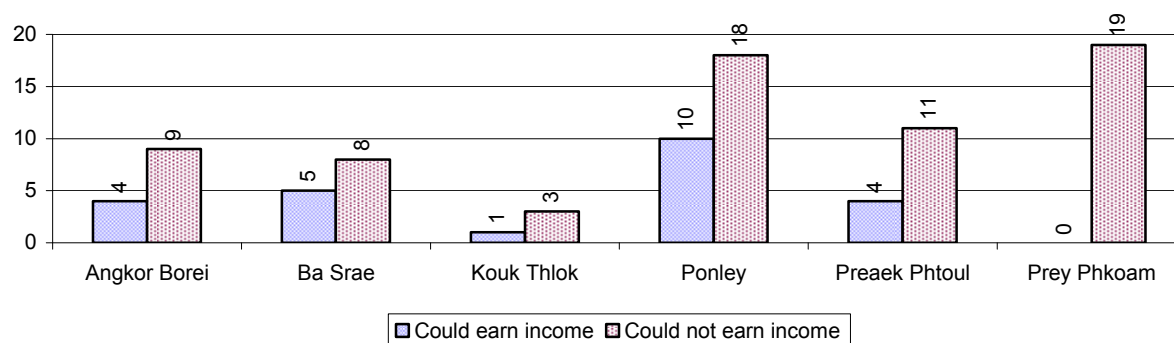
3.4.3 Registered Families with Member(s) using Drugs or living with HIV/AIDS, by Commune, for 2008



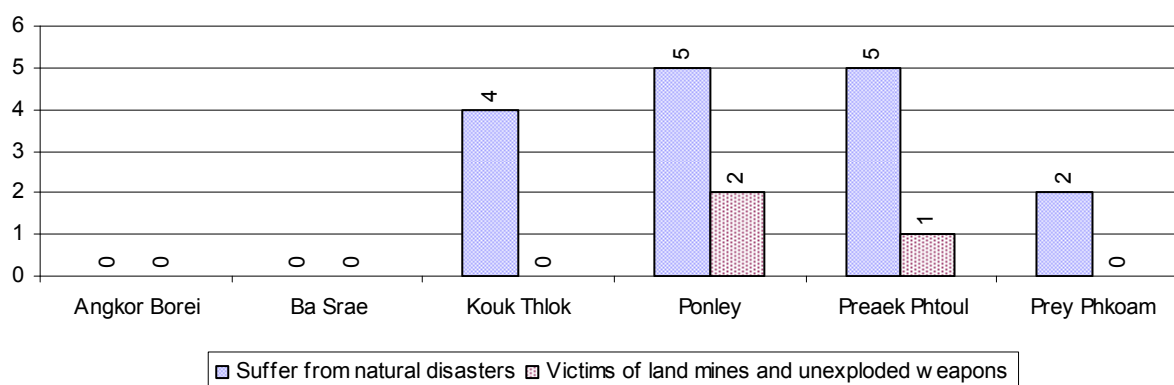
3.4.4 Elderly Persons without a Guardian and orphaned/abandoned Children under 18 years old, by Commune, for 2008



3.4.5 Number of disabled People who could or could not earn an Income, by Commune, for 2008



3.4.6 Number of Families who suffered from natural Disasters, and number of Victims of Land Mines and unexploded Weapons, by Commune, in 2008



3.5 Migration

3.5.1 Migration over 3 years

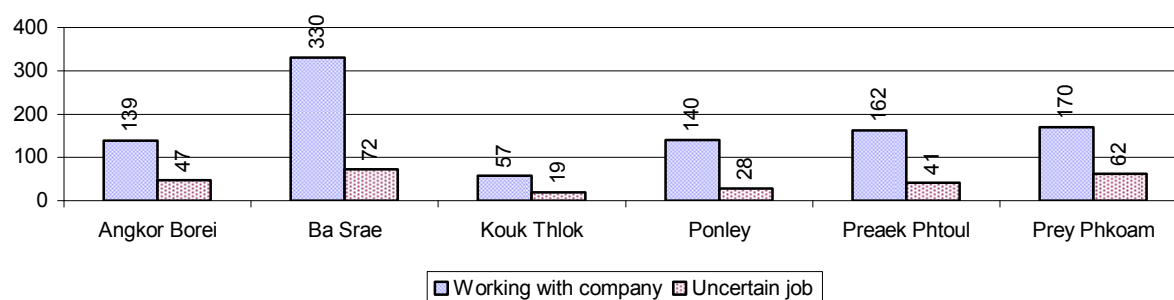
Description	2006	2007	2008
Number of families permanently in-migrated	37families	41 families	30 families
Total number of people	152 person(s)	148 person(s)	115 person(s)
Total number of female	88 person(s)	88 person(s)	62 person(s)
Number of families permanently out-migrated	76 families	66 families	47 families
Total number of people	251 person(s)	289 person(s)	201 person(s)
Total number of female	128 person(s)	158 person(s)	112 person(s)
Number of families staying temporarily	32 families	19 families	14 families
Total number of people	116 person(s)	99 person(s)	46 person(s)
Total number of female	62 person(s)	53 person(s)	26 person(s)

3.5.2 Job Migration

Description	2006	2007	2008	
Number of people migrated to work with company/factory	3%	3%	4%	998 persons
Number of people migrated to work, but have uncertain jobs	1%	1%	1%	269 persons

Note: Calculated as a percentage of the total population of 18-60 year olds

3.5.3 Number of People working outside their home Villages in a Company/Factory or with an uncertain Job in 2008

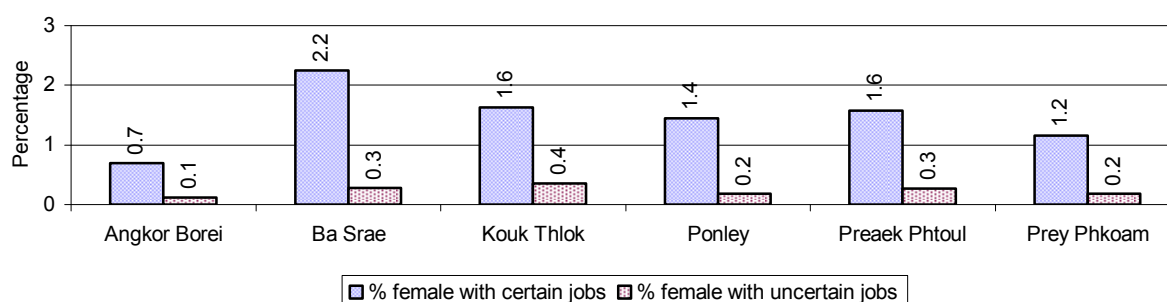


3.5.4 Female migration over 3 years

Description	2006 %	2007 %	2008	
			%	Number
Total number of migrants	1.7%	2.0%	2.2%	1,267 person(s)
Number of female migrants	1.2%	1.4%	1.6%	903 person(s)
Total number of migrants, who go to work with company/factory (with certain jobs)	1.3%	1.5%	1.7%	998 person(s)
Number of female migrants with certain jobs	1.0%	1.2%	1.4%	785 person(s)
Total number of migrants with uncertain jobs	0.5%	0.5%	0.5%	269 person(s)
Number of female migrants with uncertain jobs	0.2%	0.2%	0.2%	118 person(s)

Note: Calculated as a percentage of the total population

3.5.5 Percentage female Migrants with certain and uncertain Jobs, by Commune, in 2008



Note: Calculated as a percentage of the total population of the commune

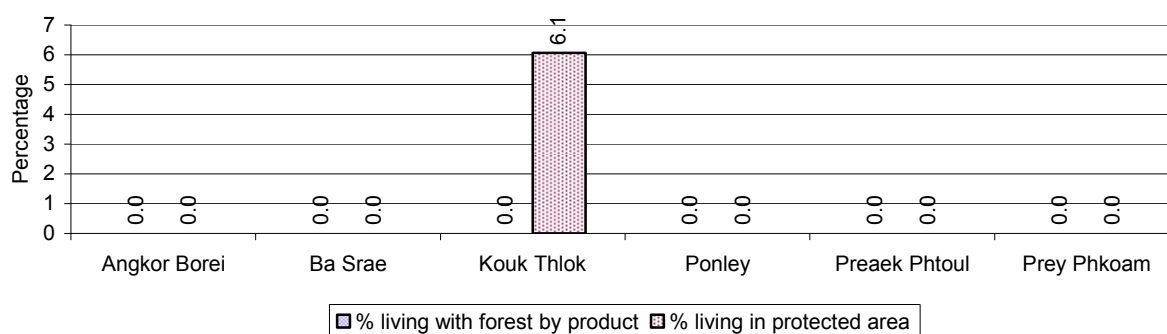
4 Natural Resources and Environment (NRE)

4.1 Families involved with NRE issues over 3 years

Description	2006 %	2007 %	2008	
			%	Number
Families living with forest by products	0 %	0 %	0 %	0 families
Families living in a protected area	0 %	0 %	0 %	36 families
Houses with access to garbage collection service	0 %	0 %	1 %	61 families
Families affected by environmental pollution	0 %	0 %	0 %	6 families
Families using chemical fertilizer	88 %	88 %	88 %	8,437 families
Families using chemical pesticide	80 %	81 %	84 %	8,071 families

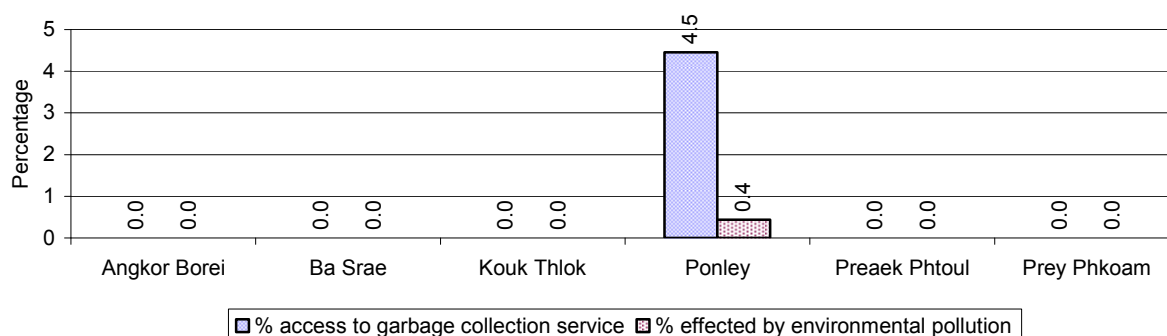
Note: Calculated as a percentage of the total number of families

4.2 Percentage of Families involved with Natural Resource issues, by Commune, for 2008



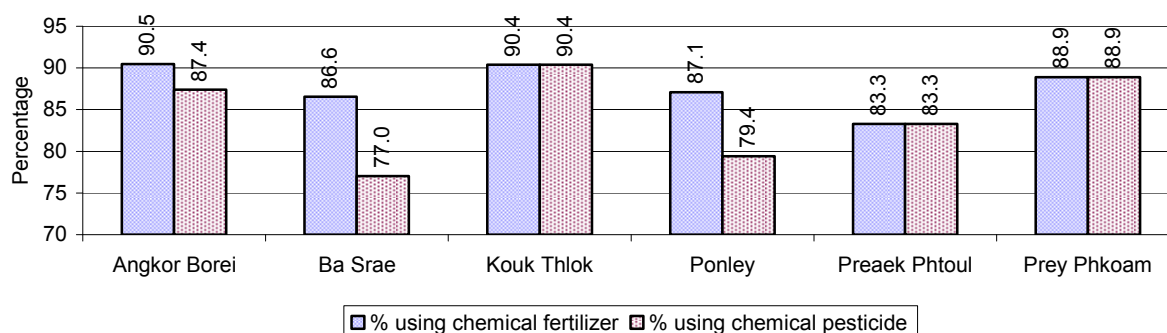
Note: Calculated as a percentage of the number of families in each commune

4.3 Percentage Houses with access to Garbage collection and Families affected by environmental Pollution, by Commune, for 2008



Note: Garbage collection is calculated as a percentage of the total number of houses in each commune and families affected by environmental pollution is calculated as a percentage of the total number of families in each commune.

4.4 Percentage Families using chemical Fertilizer and chemical Pesticides, by Commune, for 2008



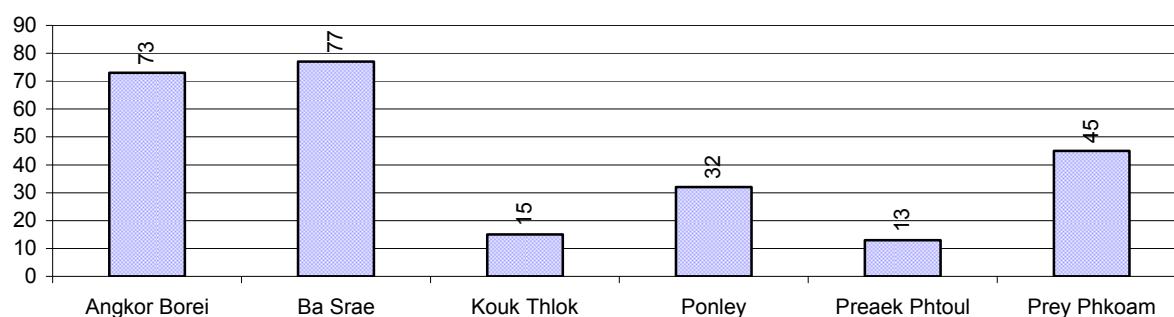
Note: Calculated as a percentage of the total number of families in each commune

5 Administration and Security

5.1 Birth Registration across 3 years

Description	2006	2007	2008
Number of infants to be registered	549 person(s)	603 person(s)	549 person(s)
Number of unregistered infants the year	148 person(s)	232 person(s)	255 person(s)
Percentage of infants unregistered	27 %	38 %	46 %

5.2 Number of unregistered Infants born in 2008, by Commune

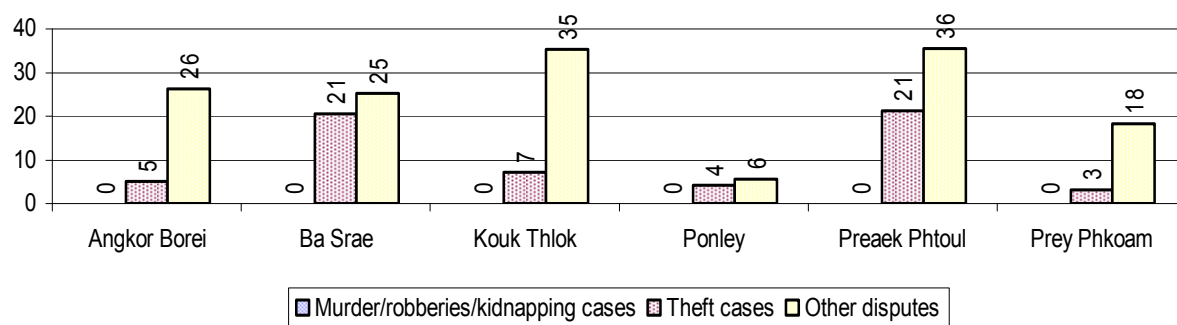


5.3 Registered criminal Cases over 3 years

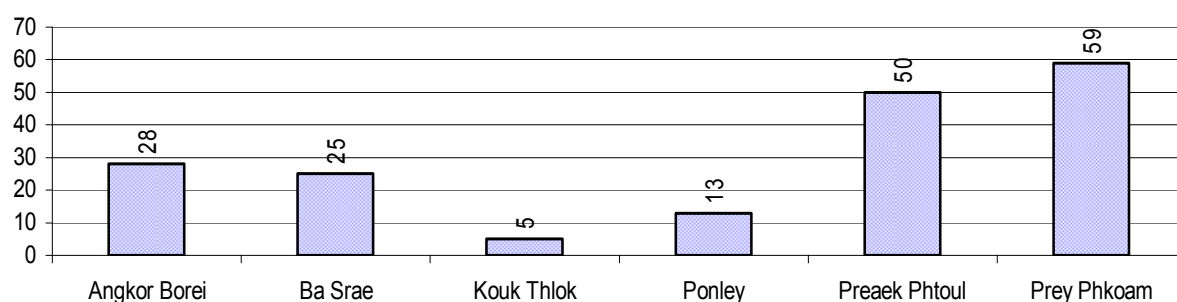
Description	2006	2007	2008
Murders, robberies and kidnapping cases	1 case(s)	0 case(s)	0 case(s)
Theft cases	91 case(s)	67 case(s)	57 case(s)
land dispute cases	155 case(s)	200 case(s)	180 case(s)
Other disputes cases	132 case(s)	145 case(s)	136 case(s)

Note: this reflects only registered criminal cases

5.4 Registered criminal Cases per 10,000 people, by Commune, for 2008



5.5 Number of registered Land Disputes, by Commune, in 2008

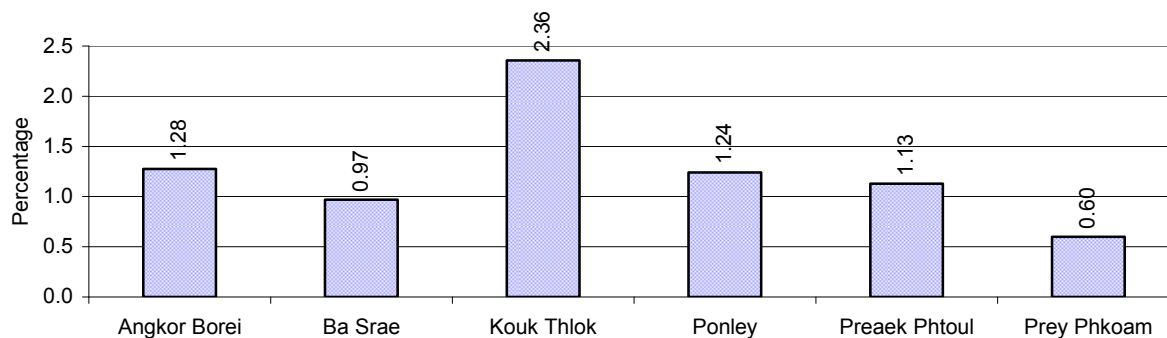


6 Gender

6.1 Registered Domestic Violence over 3 years

Description		2006	2007	2008
Families experiencing domestic violence		179 families	134 families	108 families(s)
% families experiencing domestic violence		2 %	1 %	1 %
Domestic violence cases reported by village chiefs		102 case(s)	58 case(s)	23 case(s)
Type	Physical violence	85 case(s)	46 case(s)	16 case(s)
	Sexual violence	2 case(s)	1 case(s)	0 case(s)
	Mental violence	11 case(s)	4 case(s)	3 case(s)
	Household economic violence	4 case(s)	7 case(s)	4 case(s)
Number of administrative decisions on domestic violence		60 case(s)	42 case(s)	11 case(s)
% of administrative decisions on domestic violence		59 %	72 %	48 %

6.2 Percentage of registered cases of Families experiencing domestic Violence, by Commune, in 2008



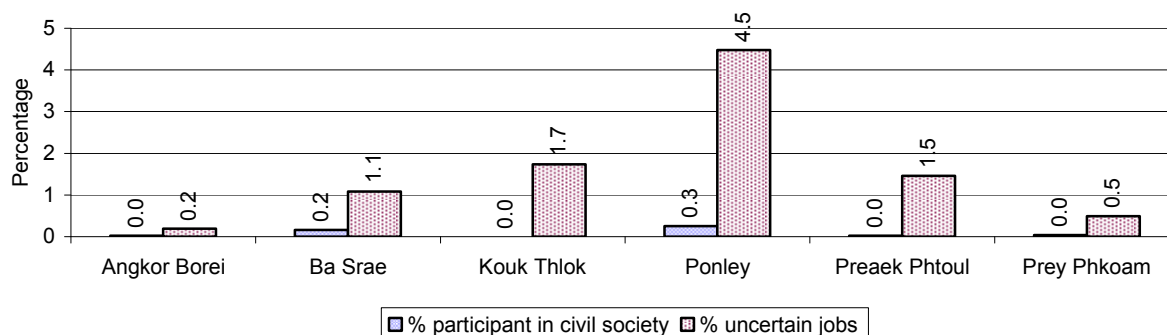
Note: Calculated as a percentage of the total number of families in each commune

6.3 Women's involvement over 3 years

Description	2006 %	2007 %	2008	
			%	Number
People participating in civil society	1%	4%	0%	172 person(s)
Women participating in civil society	0%	2%	0%	46 person(s)
People, 18-60 yrs, with uncertain/irregular jobs	1%	2%	2%	567 person(s)
Women, 18-60 yrs, with uncertain/irregular jobs	1%	1%	1%	370 person(s)

Note: Participation can be in NGOs, CBOs, credit groups, women's unions, parties and other civil society organizations. The first section is calculated as a percentage of the total population. The second section is calculated as a percentage of the total 18-60 year old population.

6.4 Percentage of Female Participants in Civil Society and of 18-60 year women with uncertain Jobs, by Commune, in 2008



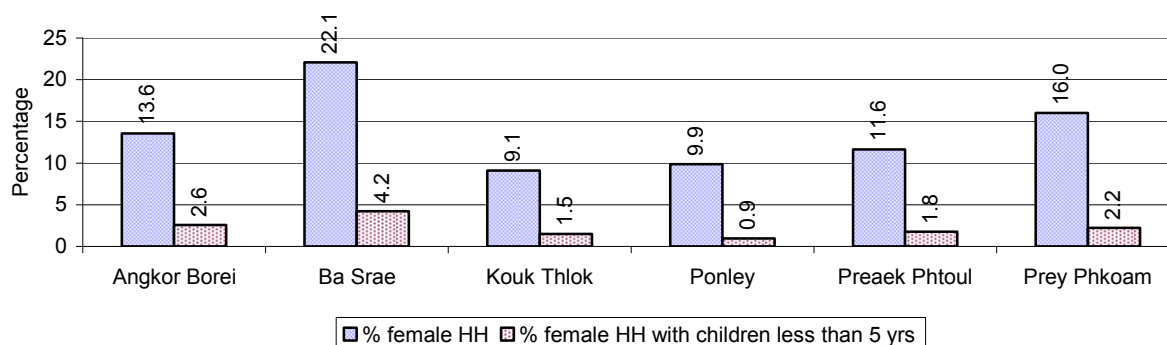
Note: Percentage of female participants in civil society is calculated as a percentage of the total population per commune. The percentage of 18-60 years old women with uncertain jobs is calculated as a percentage of the total 18-60 year old population per commune.

6.5 Female-headed Households over 3 years

Families with:	2006	2007	2008	
	%	%	%	Number
Households in which a woman is the family head	13%	12%	15%	1,410 families
Households in which a woman is the family head with children of less than 5 yrs	2%	2%	2%	234 families

Note: Calculated as a percentage of the total number of families

6.6 Percentage female-headed Households and with Children of less than 5 years old, by Commune, in 2008



Note: Calculated as a percentage of the total number of families in each commune
HH: Headed Household

7 Indigenous People in the District

7.1 Ethnic Minorities in the District over 3 years

Race of indigenous	2006		2007		2008	
	# families	# population	# families	# population	# families	# population
Phnong	0 families	0 person(s)	0 families	0 person(s)	0 families	0 person(s)
Kouy	0 families	0 person(s)	0 families	0 person(s)	0 families	0 person(s)
Stieng	0 families	0 person(s)	0 families	0 person(s)	0 families	0 person(s)
Mil	0 families	0 person(s)	0 families	0 person(s)	0 families	0 person(s)
Kroal	0 families	0 person(s)	0 families	0 person(s)	0 families	0 person(s)
Thmorn	0 families	0 person(s)	0 families	0 person(s)	0 families	0 person(s)
Khaonh	0 families	0 person(s)	0 families	0 person(s)	0 families	0 person(s)
Tompouonn	0 families	0 person(s)	0 families	0 person(s)	0 families	0 person(s)
Charay	0 families	0 person(s)	0 families	0 person(s)	0 families	0 person(s)
Kroeung	0 families	0 person(s)	0 families	0 person(s)	0 families	0 person(s)
Kavet	0 families	0 person(s)	0 families	0 person(s)	0 families	0 person(s)
Saouch	0 families	0 person(s)	0 families	0 person(s)	0 families	0 person(s)
Lun	0 families	0 person(s)	0 families	0 person(s)	0 families	0 person(s)
Kachak	0 families	0 person(s)	0 families	0 person(s)	0 families	0 person(s)
Praov	0 families	0 person(s)	0 families	0 person(s)	0 families	0 person(s)
Others	0 families	0 person(s)	0 families	0 person(s)	0 families	0 person(s)
Total	0 families	0 person(s)	0 families	0 person(s)	0 families	0 person(s)

Note: "Others" refer to other ethnic groups which are not listed.

7.2 Other Minorities in the District over 3 years

Minority	2006		2007		2008	
	# families	# population	# families	# population	# families	# population
Khmer Islamic	61 families	509 person(s)	10 families	49 person(s)	72 families	326 person(s)
Vietnamese	12 families	73 person(s)	8 families	19 person(s)	9 families	29 person(s)
Laos	0 families	0 person(s)	0 families	0 person(s)	0 families	0 person(s)

Note: Number of indigenous and minority population are additional data, so some village may not recorded.

SECTION C: PLANS AND PROJECTS

8 Priorities and Plans

8.1 Priorities of Commune Councils for 2009 in the District by Sector

The District Priority Activity Matrix (DPAM) data are taken from the CDPD. The DPAM is used for the District Integration Workshop (DIW), to show what kind of projects the commune has proposed in their Commune Investment Plan (CIP) for 2009. Donors, departments and other agencies then consider which projects they want to support and which projects they are not interested in. This results in Temporary Agreements between the Commune Council and the Supporter (NGO, Department, private donor, etc), as shown in table 8.2

No.	Project Name	Angkor Borei	Ba Srae	Kouk Thlok	Ponley	Preaek Phtoul	Prey Phkoam	Req.Project
		210101	210102	210103	210104	210105	210106	Total
Economic								
1	Mixed farming system training				3 training	4 training		2
2	Rice cultivation technique training	3 training		3 training				2
3	Animal raising training		2 training		1 training		1 training	3
4	Rice seed request				4 T			1
5	Calf for raising request				6 Head			1
6	Pesticide request					300 Liter		1
7	Fish raising training			4 training				1
8		4281 m	7950 m		6 km	6070 m		4
9							2200 m	1
10		120 m		1 place				2
11			4 place					1
12		3500 m	4700 m	12561 m	90 km	8250 m	3580 m	6
13			2 place					1
14			7 km				3000 m	2
15	Cash credit			2%				1
16	Electricity supply		1 set					1
Social								
1	Health/hygiene education for local people				6 training			1
2	TBA training						1 person	1
3	Latrine construction	170 toilet	100 toilet		35 place	104 toilet	120 toilet	5
4	Sanitation education			3 training				1
5	KMeragppl;meFüa)aycMeraHTwks¥at			8 Container				1
6					2 place			1
7	Literacy teacher support			3 person				1

District Data Book 2009: Development Plans and Projects

No.	Project Name	Angkor Borei	Ba Srae	Kouk Thlok	Ponley	Preaek Phtoul	Prey Phkoam	Req.Project
		210101	210102	210103	210104	210105	210106	Total
8	Junior high school construction					1 building		1
9	School building			2 building				1
10	Kindergarten school construction/repair	10 room			2 room		6 room	3
11	Motivating pupil's parents for school enrollment		2 training			4 training		2
12	Teacher/volunteer teacher need					11 person		1
13	Scholarship provision to poor pupils					25 person		1
NREM								
1	Fishery law education	6 training	4 training	4 training	2 training			4
2	Establishment of NREM protection community					1 Team		1
3	Tree plantation project	50000 Tree	4856 Tree			7500 Tree	200000 Tree	4
4	Fish raising community support				3 training			1
5	Temple/cultural ancient protection strengthening					4 training		1
6	Solving rubbish problems	120 place						1
7	Biogas cooking project						30 place	1
Administration and Security								
1	Land law dissemination	2 training	2 training	2 training	3 training			4
2	Provision of land titles/certificates			540 family	0 doc		400 doc	3
3	Law/regulation dissemination		2 training					1
4	Information board provision/creation/built		3 Piece					1
5	Penal and civil law dissemination	2 training		4 training		4 training	1 training	4
Gender								
1	Women & Children FP strengthening						1 training	1
2	Weaving skill training/weaving craft creation	6 training	1 training		3 training			4
3	Law against domestic violence dissemination	6 training		4 training	3 training	4 training	1 training	5
4	Child protection network formation/strengthening		2 training					1

Source: CDPD – District Priority Matrix

8.2 Temporary Agreements by Commune, for 2009²

At the District Integration Workshop (DIW) the Supporters (donors, agencies, private donors, NGOs, etc.) identify which projects/activities they would like to support or they put forward their own projects to be implemented in a particular commune. Once there is agreement between Commune Councils and Supporters on specific projects a **Temporary Agreement** is signed by the commune and the Supporter to show their mutual commitment to the identified projects/activities.

It is important to keep in mind that such Temporary Agreements do not necessarily result in implementation.

8.2.1 Temporary Agreements for 2009 as per DIW 2008 for Commune: Angkor Borei

Commune GIS	Commune	Temporary Agreements				Supporter	Funding Source	Listed in CIP before DIW
		Project Name	Quantity	Unit	Est.Cost (K.Riels)			
Economic								
210101	Angkor Borei		1	Course/year	0	Provincial Training Center		<input type="checkbox"/>
210101	Angkor Borei	Rice cultivation technique training	3	training	0	Department of Agriculture Forestry and Fisheries	PIF	✓
210101	Angkor Borei		1	Course/year	0	Provincial Training Center		<input type="checkbox"/>
210101	Angkor Borei		1	Course/year	0	Provincial Training Center		<input type="checkbox"/>
210101	Angkor Borei		1	Course/year	0	Provincial Training Center		<input type="checkbox"/>
210101	Angkor Borei		1	Course/year	0	Provincial Training Center		<input type="checkbox"/>
210101	Angkor Borei		1	Course/year	0	Provincial Training Center		<input type="checkbox"/>
Social								
210101	Angkor Borei		1	Course/year	0	Provincial Training Center		<input type="checkbox"/>
210101	Angkor Borei	Law against domestic violence dissemination	1	toilet	0	Department of Education Youth and Sports	PIF	✓
210101	Angkor Borei		12	Month	0	Reproductive Health Association of Cambodia		<input type="checkbox"/>

² Not all the data from the CDPD has been translated to English, this has resulted in some cells in the TA tables being blank.

Commune GIS	Commune	Temporary Agreements				Supporter	Funding Source	Listed in CIP before DIW
		Project Name	Quantity	Unit	Est.Cost (K.Riels)			
210101	Angkor Borei		12	Month	0	Reproductive Health Association of Cambodia		<input type="checkbox"/>
210101	Angkor Borei		1	Course/year	0	Provincial Training Center		<input type="checkbox"/>
210101	Angkor Borei		40	person	0	Department of Women	PIF	<input type="checkbox"/>
Administration and Security								
210101	Angkor Borei	Land law dissemination	1	training	720	Department of Land Management, Urban Planning & Construction	PIF	✓
Gender								
210101	Angkor Borei		1	Course/year	0	Provincial Training Center		<input type="checkbox"/>
210101	Angkor Borei		1	Course/year	0	Provincial Training Center		<input type="checkbox"/>
210101	Angkor Borei		1	Course/year	0	Provincial Training Center		<input type="checkbox"/>
210101	Angkor Borei		2	person	0	Department of Women	PIF	<input type="checkbox"/>

8.2.2 Temporary Agreements for 2009 as per DIW 2008 for Commune: Ba Srae

Commune GIS	Commune	Temporary Agreements				Supporter	Funding Source	Listed in CIP before DIW
		Project Name	Quantity	Unit	Est.Cost (K.Riels)			
Economic								
210102	Ba Srae		1	Course/year	0	Department of Agriculture Forestry and Fisheries	PIF	<input type="checkbox"/>
Social								
210102	Ba Srae		12	Month	0	Reproductive Health Association of Cambodia		<input type="checkbox"/>
210102	Ba Srae		12	Month	0	Reproductive Health Association of Cambodia		<input type="checkbox"/>
210102	Ba Srae		40	person	0	Department of Women	PIF	<input type="checkbox"/>

Commune GIS	Commune	Temporary Agreements				Supporter	Funding Source	Listed in CIP before DIW
		Project Name	Quantity	Unit	Est.Cost (K.Riels)			
Administration and Security								
210102	Ba Srae	Land law dissemination	1	training	720	Department of Land Management, Urban Planning & Construction	PIF	✓
Gender								
210102	Ba Srae	Law against domestic violence dissemination	40	person	0	Department of Women	PIF	<input type="checkbox"/>
210102	Ba Srae		2	person	0	Department of Women	PIF	<input type="checkbox"/>

8.2.3 Temporary Agreements for 2009 as per DIW 2008 for Commune: Kouk Thlok

Commune GIS	Commune	Temporary Agreements				Supporter	Funding Source	Listed in CIP before DIW
		Project Name	Quantity	Unit	Est.Cost (K.Riels)			
Economic								
210103	Kouk Thlok		1	Course/year	0	Provincial Training Center		<input type="checkbox"/>
210103	Kouk Thlok	Rice cultivation technique training	1	training	0	Department of Agriculture Forestry and Fisheries	PIF	✓
210103	Kouk Thlok		2	Course/year	0	Provincial Training Center		<input type="checkbox"/>
210103	Kouk Thlok		1	Course/year	0	Provincial Training Center		<input type="checkbox"/>
210103	Kouk Thlok		1	Course/year	0	Provincial Training Center		<input type="checkbox"/>
210103	Kouk Thlok		1	Course/year	0	Provincial Training Center		<input type="checkbox"/>
Social								
210103	Kouk Thlok		40	person	0	Department of Women	PIF	<input type="checkbox"/>
210103	Kouk Thlok		1	building	0	Department of Tourism	PIF	<input type="checkbox"/>
210103	Kouk Thlok		12	Month	0	Reproductive Health Association of Cambodia		<input type="checkbox"/>
210103	Kouk		1	Course/year	0	Provincial Training Center		<input type="checkbox"/>

District Data Book 2009: Development Plans and Projects

Commune GIS	Commune	Temporary Agreements				Supporter	Funding Source	Listed in CIP before DIW
		Project Name	Quantity	Unit	Est.Cost (K.Riels)			
	Thlok							
210103	Kouk Thlok		12	Month	0	Reproductive Health Association of Cambodia		<input type="checkbox"/>
NREM								
210103	Kouk Thlok		1	Course/year	204	Department of Culture and Fine Arts	PIF	<input type="checkbox"/>
Administration and Security								
210103	Kouk Thlok	Land law dissemination	1	training	720	Department of Land Management, Urban Planning & Construction	PIF	✓
Gender								
210103	Kouk Thlok		2	person	0	Department of Women	PIF	<input type="checkbox"/>
210103	Kouk Thlok		1	Course/year	0	Provincial Training Center		<input type="checkbox"/>
210103	Kouk Thlok	Law against domestic violence dissemination	40	person	0	Department of Women	PIF	<input type="checkbox"/>
210103	Kouk Thlok		1	Course/year	0	Provincial Training Center		<input type="checkbox"/>

8.2.4 Temporary Agreements for 2009 as per DIW 2008 for Commune: Ponley

Commune GIS	Commune	Temporary Agreements				Supporter	Funding Source	Listed in CIP before DIW
		Project Name	Quantity	Unit	Est.Cost (K.Riels)			
Social								
210104	Ponley		12	Month	0	Reproductive Health Association of Cambodia		<input type="checkbox"/>
210104	Ponley		12	Month	0	Reproductive Health Association of Cambodia		<input type="checkbox"/>
210104	Ponley		1	place	0	Department of Education Youth and Sports	PIF	<input type="checkbox"/>
210104	Ponley		40	person	0	Department of Women	PIF	<input type="checkbox"/>
Gender								
210104	Ponley	Law against domestic violence	40	person	0	Department of Women	PIF	<input type="checkbox"/>

Commune GIS	Commune	Temporary Agreements				Supporter	Funding Source	Listed in CIP before DIW
		Project Name	Quantity	Unit	Est.Cost (K.Riels)			
		dissemination						
210104	Ponley		2	person	0	Department of Women	PIF	<input type="checkbox"/>

8.2.5 Temporary Agreements for 2009 as per DIW 2008 for Commune: Preaek Phtoul

Commune GIS	Commune	Temporary Agreements				Supporter	Funding Source	Listed in CIP befor DIW
		Project Name	Quantity	Unit	Est.Cost (K.Riels)			
Social								
210105	Preaek Phtoul		12	Month	0	Reproductive Health Association of Cambodia		<input type="checkbox"/>
210105	Preaek Phtoul		12	Month	0	Reproductive Health Association of Cambodia		<input type="checkbox"/>
210105	Preaek Phtoul	Khmer culture awareness education	2	Course/year	322	Department of Culture and Fine Arts	PIF	<input type="checkbox"/>
Gender								
210105	Preaek Phtoul	Law against domestic violence dissemination	40	person	0	Department of Women	PIF	<input type="checkbox"/>
210105	Preaek Phtoul		2	person	0	Department of Women	PIF	<input type="checkbox"/>

8.2.6 Temporary Agreements for 2009 as per DIW 2008 for Commune: Prey Phkoam

Commune GIS	Commune	Temporary Agreements				Supporter	Funding Source	Listed in CIP before DIW
		Project Name	Quantity	Unit	Est.Cost (K.Riels)			
Social								
210106	Prey Phkoam		12	Month	0	Reproductive Health Association of Cambodia		<input type="checkbox"/>
210106	Prey Phkoam		12	Month	0	Reproductive Health Association of Cambodia		<input type="checkbox"/>
Gender								
210106	Prey Phkoam		2	person	0	Department of Women	PIF	<input type="checkbox"/>
210106	Prey Phkoam	Law against domestic violence dissemination	40	person	0	Department of Women	PIF	<input type="checkbox"/>

Source: CDPD, District Level Detail TA resulting from DIW

8.3 Outputs, estimated and actual costs of C/S Fund Projects between 2005 and 2008, by Commune

Commune	Project Type	Budget Year	Output		Quantity	Unit	Unit Cost MR	
			Description	Type			Estimate	Actual
Angkor Borei	Irrigation	2005	Canal	Repair	1.832	Km	40.56	32.90
Angkor Borei	Irrigation	2006	Canal	Repair	1.282	Km	40.21	40.49
Angkor Borei	Rural Transport	2007	Gravel road	New	0.983	Km	37.83	42.99
Angkor Borei	Rural Transport	2007	Single pipe culvert	New	1	Place	1.77	42.99
Angkor Borei	Rural Transport	2007	Drift	New	1	Place	4.00	42.99
Angkor Borei	Rural Transport	2008	Single pipe culvert	New	1	Place	2.67	46.59
Angkor Borei	Rural Transport	2008	Gravel road	New	0.753	Km	43.94	46.59
Ba Srae	Irrigation	2005	Canal	Repair	1.409	Km	46.88	33.29
Ba Srae	Irrigation	2006	Canal	Repair	1.214	Km	38.02	38.61
Ba Srae	Rural Transport	2007	Single pipe culvert	New	1	Place	1.70	38.18
Ba Srae	Rural Transport	2007	Earth road	Repair	1.583	Km	36.48	38.18
Ba Srae	Rural Transport	2008	Gravel road	Repair	1.5	Km	41.05	41.34
Kouk Thlok	Irrigation	2005	Canal	Repair	1.55	Km	27.37	24.33
Kouk Thlok	Irrigation	2006	Canal	Repair	1.033	Km	26.20	26.19
Kouk Thlok	Irrigation	2007	Canal	Repair	0.991	Km	27.54	27.53
Kouk Thlok	Irrigation	2008	Canal	Repair	0.936	Km	28.48	28.46
Ponley	Irrigation	2005	Canal	Repair	2	Km	25.70	22.40
Ponley	Irrigation	2006	Canal	Repair	1.58	Km	35.34	35.63
Ponley	Irrigation	2007	Canal	Repair	1.149	Km	33.00	33.09
Ponley	Irrigation	2008	Canal	Repair	1.037	Km	34.71	34.69
Preaek Phtoul	Rural Transport	2005	Earth road	Repair	0.44	Km	28.64	27.70
Preaek Phtoul	Rural Transport	2006	Earth road	Repair	0.557	Km	32.69	32.67
Preaek Phtoul	Rural Transport	2007	Earth road	Repair	0.5306	Km	28.02	35.60
Preaek Phtoul	Rural Transport	2007	Single pipe culvert	New	4	Place	7.60	35.60
Preaek Phtoul	Rural Transport	2008	Earth road	Repair	0.98	Km	24.73	36.16
Preaek Phtoul	Rural Transport	2008	Single pipe culvert	New	4	Place	11.45	36.16
Prey Phkoam	Rural Domestic Water Supplies	2005	Pond with no filter	New	1	Place	30.41	30.25
Prey Phkoam	Irrigation	2006	Canal	Repair	0.941	Km	34.87	34.80
Prey Phkoam	Irrigation	2007	Canal	Repair	1.774	Km	37.61	37.61
Prey Phkoam	Rural Transport	2008	Earth road	Repair	1.028	Km	38.49	38.87

Source: PID

8.4 Total Expenditure on C/S Fund Projects by sector and commune between 2005 and 2008

Sector	Total Cost in Million Riels					
	Angkor Borei	Ba Srae	Kouk Thlok	Ponley	Preaek Phtoul	Prey Phkoam
Irrigation	73.39	71.90	106.52	125.81		72.41
Rural Domestic Water Supplies						30.25
Rural Transport	89.57	79.53			132.12	38.87

*Source: PID***8.5 Actual 2009 C/S Fund projects by Commune**

Commune	Project Type	Project Output		Quantity	Unit	Fund Source (Riels)		
		Description	Type			Total	C/S	Local Contribution
Angkor Borei	Rural Transport	Crushed stone road	Upgrade	0.6	km	55,900,000	55,700,000	200,000
Angkor Borei	Rural Transport	Crushed stone road	Upgrade	1	km	55,900,000	55,700,000	200,000
Ba Srae	Rural Transport	Crushed stone road	Repair	0.57	km	16,600,000	16,500,000	100,000
Ba Srae	Irrigation	Earth dam	Repair	0.44	km	34,785,000	34,685,000	100,000
Kouk Thlok	Irrigation	Unlined Earth canal	Repair	1.5	km	37,838,000	37,638,000	200,000
Ponley	Irrigation	Unlined Earth canal	Upgrade	1.5	km	50,476,000	50,176,000	300,000
Preaek Phtoul	Rural Transport	Crushed stone road	Upgrade	0.785	km	46,793,400	46,431,700	361,700
Preaek Phtoul	Rural Transport	Crushed stone road	Upgrade	0.885	km	46,793,400	46,431,700	361,700
Prey Phkoam	Rural Transport	Crushed stone road	Upgrade	0.43	km	28,150,000	28,000,000	150,000
Prey Phkoam	Rural Transport	Crushed stone road	Upgrade	0.123	km	28,150,000	28,000,000	150,000
Prey Phkoam	Rural Transport	Crushed stone road	Upgrade	0.427	km	28,150,000	28,000,000	150,000
Prey Phkoam	Rural Transport	Crushed stone road	Upgrade	0.16	km	28,150,000	28,000,000	150,000
Prey Phkoam	Irrigation	Unlined Earth canal	Upgrade	0.715	km	29,407,700	29,257,700	150,000

Source: PID

9 District level Projects from 2006 to 2009

District Initiative Projects (DIPs) are funded by Danida, DFID and PSDD (UNDP, DFID and SIDA).

Funding for 2006-2008

Between 2006 and 2008 there were 14 provinces funded by PSDD and 10 by Danida and DFID. The list of provinces and who funded these is below

Danida and DFID funded DIPs:

Kampong Cham	Kampong Speu	Koh Kong	Kratie	Monduliri
Pursat	Ratanakiri	Siem Reap	Sihanoukville	Kep

PSDD funded DIPs:

Banteay Meanchey	Battambang	Kampong Chhnang	Kandal	Phnom Penh
Prey Veng	Svay Rieng	Takeo	Kampong Thom	Preah Vihear
Stung Treng	Kampot	Oddar Meanchey	Pailin	

Funding for 2009

In 2009 there was a change to the number of provinces funded by the two streams. Danida and DFID were still funding the same 10 provinces they had been funding the previous three years, but two more provinces were added *Kampong Thom and Kampot*. Now PSDD funds 12 provinces and Danida and DFID fund 12.

9.1 District Initiative Infrastructure Projects from 2006 to 2009

9.1.1 District Initiative Infrastructure Projects for 2006 to 2008

No District Initiative Infrastructure Projects were implemented in this district for 2006-2008

9.1.2 District Initiative Infrastructure Projects in 2009

No District Initiative Infrastructure Projects have been implemented in this district for 2009

9.2 District Initiative Service Projects from 2006 to 2009

9.2.1 District Initiative Service Projects for 2006 to 2008

No District Initiative Service Projects were implemented in this district for 2006-2008

9.2.2 District Initiative Service Projects in 2009

Project Name	Sector	Implementing Agency	Budget	Project outputs/ capacities	No. of Beneficiaries		Progress	Remarks on Issues of Progress
					Total	Female		
Dissemination of traffic rules and regulations	ADM	Police Inspection	\$627.50	15 courses	450	135	100%	
Training on rice production techniques and demonstration	AGR	Agriculture Office	\$1,246.00	2 courses	180	54	100%	
Training on chicken raising techniques	AGR	Agriculture Office	\$990.00	5 courses	150	30	100%	
Training on compost making	AGR	Agriculture Office	\$363.00	3 courses	90	60	100%	
Dissemination on environment and natural resources management	NRM	Environment Office	\$297.50	7 courses	210	70	100%	
Weaving vocational training	GEN	WA Office	\$1,859.00	1 course	10	10	0%	Bidding will be taken place soon.
Education on rural health and sanitation	HEA	Health Center/DO	\$627.50	15 courses	405	180	100%	
Dissemination on anti-domestic violence	GEN	WA Office	\$627.50	15 courses	450	225	80%	
Dissemination on human trafficking law	GEN	WA Office	\$85.00	2 courses	60	10	100%	
Dissemination on land and construction law	LUM	LMUCC Office	\$382.50	9 courses	270	90	56%	

9.3 Inter Commune Council Projects in 2008 and 2009

9.3.1 ICC Projects in 2008

No ICC projects in this district at this time

9.3.2 ICC Projects in 2009

No ICC projects in this district at this time

Source: ICC project, Ministry of Interior (DoLA), -UNDP project for Local Governance – DDLG

9.4 Other Projects in 2008 and 2009

9.4.1 RPRP

There are no RPRP projects being implemented in this district or province at this time. The RPRP is only being implemented in Svay Rieng and Prey Veng

9.4.1.1 RPRP Projects from 2006 to 2008

No RPRP projects in this district at this time

9.4.1.2 RPRP Projects in 2009

No RPRP projects in this district at this time

9.4.2 Seth Korma

9.4.2.1 Seth Koma 2007

There are no Seth Korma projects being implemented in this district or province at this time.

Source: UNICEF

9.4.2.2 Seth Koma 2008

There are no Seth Korma projects being implemented in this district or province at this time.

Source: UNICEF

9.4.2.3 Seth Koma 2009

There are no Seth Korma projects being implemented in this district or province at this time.

Source: UNICEF

SECTION D: SERVICES AND ORGANIZATIONS

10 Infrastructure

10.1 Length of and Expenditure on Roads in 2008, by District

There were no data available for this district at the time data collection

10.2 Scale of and Expenditure on Irrigation in 2008, by District

There were no data available for this district at the time data collection

10.3 Power Supply in 2008, by District

There were no data available for this district at the time data collection

11 Health Facilities

Please note that the Operational District (health) boundaries are different to the administrative district boundaries. Therefore the data provided here shows the facilities, staff, NGOs etc in each Operational District within the province NOT the administrative district.

Acronyms

Com Cov	Commune Covered	MW2	Secondary Midwives
CPA	Complementary Package of Activities	NU1	Primary Nurse
Dr	Doctor	NU2	Secondary Nurse
FDH	Former District Hospital	OD	Operational District
HC	Health Center	Others	Other Staff
HC (NB)	Health Center no building	PHD	Provincial Health Department
HP	Health Post	Pop 04-05	Population Covered 2004 or 2005
MA	Medical Assistant	RH	Referral Hospital
MPA	Minimum Package of Activities	Vil Cov	Village Covered
MW1	Primary Midwives	VIL-HC	Distance from Village to Health Center

11.1 Health Facilities in the Province, by Operational District

Takeo	OD	RH	HC	HP
Ang Rokar	1	1	9	1
Bati	1		13	
Daun Keo	1	1	15	
Kirivong	1	1	20	1
Prey Kabass	1		13	
Total	5	3	70	2

11.2 Health Facilities and Staff in the province, by Operational District

This table shows health facilities, staff and coverage of health facilities in each operational district.

No	Facility Name	Type	Class	Dr	Ma	Nu2	Nu1	Mw2	Mw1	Others	Com Cov	Vil Cov	Pop. 04-05
Ang Rokar													
1	Ang Rokar	HC	MPA	0	1	1	3	1	1	0	3	20	14,124
2	Angk Ta Saom	HC	MPA	0	1	2	0	1	1	2	1	22	14,377
3	Kus	HC	MPA	0	0	3	1	0	2	0	2	26	13,226
4	Prey Chuor	HC	MPA	0	1	2	2	1	0	0	2	17	10,830
5	Prey Sbat	HC	MPA	0	1	1	3	1	0	0	3	18	14,940

District Data Book 2009: Services and Organizations

No	Facility Name	Type	Class	Dr	Ma	Nu2	Nu1	Mw2	Mw1	Others	Com Cov	Vil Cov	Pop. 04-05
6	Ta Phem	HC	MPA	0	1	1	1	0	2	1	1	23	14,426
7	Tram Kak	HC	MPA	0	1	1	1	2	0	2	2	19	13,642
8	Trapeang Andeuk	HC	MPA	0	1	1	2	0	1	1	2	15	13,977
Total:				0	7	12	13	6	7	6	16	160	109,542
Bati													
1	Trapeang Pring	HC	MPA	0	1	1	2	0	2	0	2	25	11,505
2	Chambak	HC	MPA	0	0	0	0	0	0	0	4	15	15,785
3	Chumreahpen	HC	MPA	0	0	0	0	0	0	0	2	22	14,920
4	Daung	HC	MPA	0	0	0	0	0	0	0	4	20	17,715
5	Kandoeng	HC	MPA	0	0	0	0	0	0	0	3	20	20,263
6	Khvav	HC	MPA	0	0	0	0	0	0	0	1	18	13,522
7	Kraing Leav	HC	MPA	0	0	0	0	0	0	0	2	29	14,837
8	Lumpong	HC	MPA	0	0	0	0	0	0	0	3	15	11,769
9	Pot Sar	HC	MPA	0	0	0	0	0	0	0	1	11	10,438
10	Rovieng	HC	MPA	0	0	0	0	0	0	0	2	24	15,438
11	Samraong	FDH	MPA	0	0	0	0	0	0	0	3	13	9,108
12	Tonle Bati	HC	MPA	0	0	0	0	0	0	0	3	12	12,064
13	Tram Khna	HC	MPA	0	0	0	0	0	0	0	4	23	13,730
Total:				0	1	1	2	0	2	0	34	247	181,094
Daun Keo													
1	Trapeang Krasaing	HC	MPA	0	0	0	0	0	0	0	4	22	12,715
2	Baray	HC	MPA	0	1	1	2	1	0	1	1	14	12,223
3	Boeng Tranh	HC	MPA	0	0	5	2	0	0	1	2	15	17,761
4	Khvav	HC	MPA	0	0	1	1	0	1	0	2	15	11,570
5	Leay Bo	HC	MPA	0	0	1	2	0	0	5	1	18	15,207
6	Lumchang	HC	MPA	1	0	3	3	0	0	1	4	19	14,822
7	Oudom Sorya	HC	MPA	0	0	3	0	0	0	6	2	21	14,935
8	Prey Sloek	FDH	MPA	0	1	1	6	0	0	1	1	17	11,977
9	Roka Khnong	HC	MPA	0	3	1	4	4	1	0	1	12	11,655
10	Roka Krau	HC	MPA	3	1	0	0	1	2	1	1	14	12,845
11	Roneam	HC	MPA	0	0	2	0	0	1	0	1	12	8,761
12	Sambo	HC	MPA	0	0	0	0	0	0	0	1	10	11,933
13	Srae Ronoung	HC	None MPA	0	1	3	1	1	1	2	1	17	8,198
14	Srangae	HC	MPA	0	0	1	3	1	1	0	1	15	8,984

District Data Book 2009: Services and Organizations

No	Facility Name	Type	Class	Dr	Ma	Nu2	Nu1	Mw2	Mw1	Others	Com Cov	Vil Cov	Pop. 04-05
15	Thlork	HC	MPA	0	0	2	1	0	1	2	1	18	11,436
Total:				4	7	24	25	8	8	20	24	239	185,022
Kirivong													
1	Trea	HC	MPA	0	0	4	1	1	0	1	3	19	16,707
2	Angk Khnol	HC	MPA	0	0	1	1	0	2	0	2	15	10,127
3	Angk Krouch	HP	Nil	0	0	0	0	0	0	0	1	1	-
4	Borey Cholsar	HC	MPA	0	0	1	1	0	0	0	0	7	3,910
5	Chaon Chum	HC	MPA	0	0	4	0	1	0	0	2	14	21,359
6	Chi Khma	HC	MPA	0	0	1	2	1	1	0	3	21	13,962
7	Daung Khpos	FDH	MPA	0	0	2	3	1	0	0	1	12	6,099
8	Kamnab	HC	MPA	0	0	1	0	0	0	0	1	6	3,132
9	Kampeng	HC	MPA	0	0	0	2	1	0	0	1	13	7,124
10	Kampong Krasaing	HC	MPA	0	0	1	0	3	0	0	1	5	3,594
11	Kok Prech	HC	MPA	0	0	0	4	0	0	0	2	21	16,979
12	Kouk Pou	HC	MPA	0	0	1	1	0	1	0	1	8	9,399
13	Krapum Chhouk	HC	MPA	0	0	2	2	0	0	0	2	17	14,007
14	Phnom Den	HC	MPA	0	0	2	0	1	0	0	1	9	6,676
15	Pich Sa (Angk Prasat)	HC	MPA	0	0	2	2	1	1	0	2	19	12,403
16	Prambei Mom	HC	MPA	0	0	1	3	3	0	0	2	16	10,313
17	Prey Melong	HC	MPA	0	0	0	2	0	0	0	2	19	8,907
18	Prey Rumdeng	HC	MPA	0	0	1	4	1	1	0	2	20	17,128
19	Prey Yuthka	HC	MPA	0	0	0	1	0	0	0	2	13	5,939
20	Romenh	FDH	MPA	0	0	0	5	2	0	0	2	17	16,640
21	Sanlung	HC	MPA	0	0	1	1	1	1	0	2	16	7,709
Total:				0	0	25	35	17	7	1	35	288	212,114
Prey Kabass													
1	Som	HC	MPA	0	0	1	2	0	2	0	2	21	16,692
2	Angkor Borey	FDH	MPA	0	2	2	0	2	0	1	2	8	15,030
3	Ba Srae	HC	MPA	0	0	1	1	0	1	1	2	10	12,498
4	Champa	HC	MPA	0	0	1	1	0	1	1	3	16	12,116
5	Kampeng	HC	MPA	0	0	2	1	0	0	4	3	18	15,687
6	Kampong Reab	HC	MPA	0	0	1	2	0	0	4	1	7	5,573
7	Kok Thlok	HC	MPA	0	0	0	2	0	1	0	1	4	3,279
8	Kraing Sla (Khen Lak)	HC	MPA	0	0	1	1	0	1	1	3	14	13,266

No	Facility Name	Type	Class	Dr	Ma	Nu2	Nu1	Mw2	Mw1	Others	Com Cov	Vil Cov	Pop. 04-05
9	Ponley	HC	MPA	0	0	1	0	0	1	0	1	6	6,969
10	Prey Lvea	HC	MPA	0	0	1	3	0	1	2	4	16	16,164
11	Prey Phkoam	HC	MPA	0	0	2	0	0	1	0	1	6	9,077
12	Sla (Phnom Chiso)	HC	MPA	0	1	1	0	0	1	2	2	17	11,590
13	Tang Yab	HC	MPA	0	0	2	0	0	0	1	3	17	11,425
Total:				0	3	16	13	2	10	17	28	160	149,366
Total All				4	18	78	88	33	34	44	137	1094	837,138

Source: MEDiCAM – Infrastructure - (http://www.medicam-cambodia.org/hsi/health_system/srch/index.asp?cboLcn=6&cmdSearch=Search&cboCHName=&cboType=)

11.3 Deliveries in 2007 in the Province, by Operational District

OD	Deliveries	Deliveries at home		Deliveries	Total deliveries	Total deliveries
	at HC	By Health Staff	By TBAs	at RH	by Health Staff	by health staff and TBAs
Ang ROKAR	2080	36	470	68	2184	2654
Bati	1650	1214	718	134	2998	3716
Daun Keo	907	1017	976	489	2413	3389
Kirivong	2835	104	686	721	3660	4346
Prey Kabass	1473	322	803	89	1884	2687
<i>Sub-total</i>	<i>8945</i>	<i>2693</i>	<i>3653</i>	<i>1501</i>	<i>13139</i>	<i>16792</i>

Source: MoH, Annual Statistics 2007

12 Education³

12.1 Schools, Classes, Students, Staff, for for all levels, for 2007/2008 by District

District	Number of Schools	Disadv. Schools	Number of Classes	Classes in Pagoda	Enrollment		Repeaters		Teaching Staff		Non-Teaching Staff		Total Staff	
					Total	Girl	Total	Girl	Total	Female	Total	Female	Total	Female
Angkor Borei	29	2	313	14	12,940	5,841	1,121	459	231	29	65	1	296	30
Bati	79	0	824	18	35,949	16,197	2,143	744	841	254	155	13	996	267
Borei Chulsa	26	0	209	0	7,776	3,428	494	214	159	25	38	4	197	29
Daunkeo	30	1	315	4	12,965	5,851	707	247	404	186	111	48	515	234
Kiri Vong	94	1	724	0	27,998	12,689	1,988	781	737	179	118	8	855	187
Koh Andet	33	0	323	5	13,579	6,185	1,342	574	344	105	70	7	414	112
Prey Kabas	63	0	645	0	27,234	12,173	2,148	768	649	167	163	14	812	181
Samrong	81	0	837	2	35,919	15,976	3,651	1,390	836	222	150	11	986	233
Traing	87	1	821	2	32,129	14,449	3,378	1,344	810	259	203	25	1,013	284
Tramkak	115	2	1,103	1	45,943	21,214	4,502	1,753	1,184	424	262	51	1,446	475
Whole Province	637	7	6,114	46	252,432	114,003	21,474	8,274	6,195	1,850	1,335	182	7,530	2,032
- Urban Area	30	1	315	4	12,965	5,851	707	247	404	186	111	48	515	234
- Rural Area	607	6	5,799	42	239,467	108,152	20,767	8,027	5,791	1,664	1,224	134	7,015	1,798

12.2 Characteristics of Schools and School Principals for 2007/2008 by Commune

Commune	Number of Schools				2 - Shift	Floating	Schools	Attached	Schools Without			Characteristics of School Principals (Incharge)			
	Pre-Sch	Primary	College	Lycee	Schools	Schools	in Pagoda	Pre-Sch	Water Sup.	Latrine		Avg. Age	Avg. Service	U.Sec+ Ed.	Female
Angkor Borei	2	3	0	1	3	0	3	2	1	1		47.8	20.5	1	0
Ba Srae	1	2	1	0	2	0	3	1	1	0		50.0	24.0	0	0
Kouk Thlok	0	4	1	0	4	0	0	0	5	3		35.6	17.0	0	0
Ponley	1	3	0	1	1	0	1	1	1	1		45.5	23.6	1	0
Preaek Phtoul	1	2	0	0	2	0	3	1	0	1		50.2	24.7	0	0
Prey Phkoam	1	4	1	0	3	0	3	1	2	1		48.5	23.3	1	0

³ All the data for section 12 comes from the Ministry of Education, Youth and Sport (MoEYS)

12.3 Enrolment by Level of Education, 2006/2007 by Commune

Commune	School	Pre school		Primary School		Lower Secondary School		Upper Secondary School		Enrolment	
		Total	Female	Total	Female	Total	Female	Total	Female	Total	Female
Angkor Borei	6	141	72	2468	1193	1104	464	318	82	4031	1811
Ba Srae	4	42	20	1800	844	435	196	0	0	2277	1060
Kouk Thlok	4	0	0	556	281	0	0	0	0	556	281
Ponley	5	90	42	1511	743	716	326	81	27	2398	1138
Preaek Phtoul	3	45	24	1177	562	0	0	0	0	1222	586
Prey Phkoam	6	50	23	2253	1038	348	134	0	0	2651	1195

12.4 Enrolment by Level of Education, 2007/2008 by Commune

Commune	School	Pre school		Primary School		Lower Secondary School		Upper Secondary School		Enrolment	
		Total	Female	Total	Female	Total	Female	Total	Female	Total	Female
Angkor Borei	6	133	74	2429	1127	1067	461	370	106	3999	1768
Ba Srae	4	43	18	1682	792	481	226	0	0	2206	1036
Kouk Thlok	5	0	0	435	205	128	49	0	0	563	254
Ponley	5	90	41	1347	638	731	316	187	59	2355	1054
Preaek Phtoul	3	30	17	1181	540	0	0	0	0	1211	557
Prey Phkoam	6	45	23	2139	987	422	162	0	0	2606	1172

12.5 Aspects of Enrolment for 2007/2008 by Commune

Commune	% Repeaters (Total)			% Over-age Enrollment (Total)			% Repeaters (Girl)			% Over-age Enrollment (Girl)		
	Primary	L.Sec.	U.Sec.	Primary	L.Sec.	U.Sec.	Primary	L.Sec.	U.Sec.	Primary	L.Sec.	U.Sec.
Angkor Borei	11.6	2.2	3.5	18.5	54.3	48.1	9.6	1.5	0.9	18.4	50.1	47.2
Ba Srae	10.9	0.4	0.0	24.1	53.8	0.0	9.5	0.4	0.0	21.5	51.3	0.0
Kouk Thlok	13.1	0.0	0.0	28.5	50.8	0.0	11.7	0.0	0.0	25.4	49.0	0.0
Ponley	12.2	1.2	0.0	30.1	41.9	44.4	10.2	0.0	0.0	29.3	35.1	30.5
Preaek Phtoul	14.2	0.0	0.0	24.5	0.0	0.0	13.5	0.0	0.0	24.1	0.0	0.0
Prey Phkoam	10.1	0.5	0.0	20.7	54.5	0.0	10.6	0.0	0.0	19.3	50.0	0.0

12.6 School Buildings for all schools in the District for 2007/2008, by Commune

Commune	Total Number of		Concrete/Brick Structure		Wooden Structure		Bamboo Structure		New Buildings		Buildings Without Good		
	Buildings	Rooms	Buildings	Rooms	Buildings	Rooms	Buildings	Rooms	Repaired	Constructed	Floor	Roof	Wall
Angkor Borei	21	76	20	75	1	1	0	0	0	0	4	0	2
Ba Srae	13	54	13	54	0	0	0	0	0	0	0	0	0
Kouk Thlok	10	26	8	23	1	1	1	2	0	1	5	7	5
Ponley	14	66	14	66	0	0	0	0	0	0	3	2	2
Preaek Phtoul	5	23	5	23	0	0	0	0	0	0	1	0	0
Prey Phkoam	12	57	12	57	0	0	0	0	0	0	0	0	0

12.7 Conditions of Classrooms and Existence of Separate School Office and Library, by Commune

Commune	Number of Class rooms	Number of Classrooms			Classrooms Without Good			Number of Furniture needed				Schools with Separate	
		in Pagoda	New Repaired	New Constr.	Floor	Roof	Wall	Desks	Chairs	Black-board	Teacher Table	Office	Library
Angkor Borei	68	0	0	0	16	0	6	50	50	7	15	5	5
Ba Srae	46	0	0	0	0	0	0	0	0	0	4	3	3
Kouk Thlok	19	0	0	5	8	10	8	0	0	3	3	2	0
Ponley	50	0	0	0	15	9	10	45	25	15	15	3	3
Preaek Phtoul	18	0	0	0	5	0	0	40	40	4	3	3	2
Prey Phkoam	45	14	0	0	0	0	0	53	65	5	12	6	4

12.8 Community Participation and Financing across all schools in the District for 2007/2008 by Commune

Commune	Parent Association				Comm. Teachers	Teaching Monks	PAP Fund (Riel)		Number of Schools Obtaining Funds from				
	Exists	Held Meet	Total	Female			per Student	per School	Sch. Income	Community	Gvt. For building	Abroad	IOs/NGOs
Angkor Borei	5	5	13	2	0	0	10,854	8,444,680	0	0	0	0	0
Ba Srae	3	3	8	1	0	0	10,121	5,655,300	0	0	0	0	0
Kouk Thlok	4	4	5	1	0	0	12,477	1,335,000	0	0	0	0	0
Ponley	4	5	9	0	0	0	12,498	5,769,260	1	0	0	0	0
Preaek Phtoul	2	2	15	3	0	0	8,382	4,933,050	0	0	0	0	0
Prey Phkoam	5	5	7	0	0	0	9,327	4,043,250	1	0	0	0	0

12.9 Percentage Student Flow Rates and Graduation by level 2006/2007, by Commune

Commune	Primary Level (Grades 1-6)			Lower Secondary Level (Grades 7-9)			Upper Secondary Level (Grades 10-12)			Successful Candidates		
	Promotion	Repetition	Dropout	Promotion	Repetition	Dropout	Promotion	Repetition	Dropout	Grade 6	Grade 9	Grade 12
Angkor Borei	83.9	11.4	4.7	76.2	2.1	21.7	82.4	4.1	13.5	380	175	68
Ba Srae	83.4	10.2	6.4	80.5	0.5	19.1	0.0	0.0	0.0	255	71	0
Kouk Thlok	63.3	10.3	26.4	0.0	0.0	0.0	0.0	0.0	0.0	56	0	0
Ponley	85.0	10.9	4.0	81.4	1.3	17.3	80.2	0.0	19.8	262	121	0
Preaek Phtoul	82.1	14.3	3.7	0.0	0.0	0.0	0.0	0.0	0.0	133	0	0
Prey Phkoam	83.5	9.6	6.8	80.2	0.6	19.3	0.0	0.0	0.0	250	53	0

13 Staff and Resources at the District

This chapter presents data from the District Information System, collected around the middle of 2009 unless otherwise specified.

13.1 District Councilors elected in 2009

Name	Sex	Year of Birth	Function	Phone
ហ៊ុន យ៉ុង	M	1954	Chairperson of The Council	097-959 0255
ឡាក់ ង្ស៊ីង	M	1952	Councillor	092-415 854
សរ ម៉េង	M	1950	Councillor	012-489 816
លីវ សារី	F	1968	Councillor	012-549 701
ស សែម	M	1954	Councillor	012-171 8353
ឡាក់ ស្រី	M	1952	Councillor	012-781 412
សេង ថន	M	1946	Councillor	012-376 359
ឯម សុខ	M	1951	Councillor	012-932 692
រស់ ខេង	M	1943	Councillor	012-391 349
ឯក ស៊ឹម	M	1944	Councillor	017-317 651
ខាន់ អ៊ឹម	M	1950	Councillor	092-843 853
យាង បូយ	M	1959	Councillor	012-635 632
អ៊ុំ តាវ	M	1952	Councillor	012-518 039
ឡេង ផា	M	1959	Councillor	011-212 212
ផាន់ ប៊ុនហ៊ាង	M	1967	Councillor	012-193 0629

13.2 Committees of the Council

Please note at the time of producing the district data books the composition of the committees was not known for all district councils and therefore data were not available for 13.2.1, 13.2.2, 13.2.3.

13.2.1 Technical Facilitation Committee

13.2.2 Women's and Children's Affairs Committee

13.2.3 Procurement Committee

13.3 Board of Governors

Name	Sex	DoB	Function	Salary Level	Body	Phone
ឈារ៉ា ហ៊ុន	M	1952	District Governor	ក.៣.៤	High Ranking Civil Servant	012-663 443
ឃុន ប៊ុន	M	1955	District Deputy Governor	ខ.២.៧	Medium Civil Servant	012-759 421
សំ សុភ័ណ្ឌ	M	1971	District Deputy Governor			012-994 739
សោម សុផាត	F	1957	District Deputy Governor	គ.១.៥	Secretary	097-665 7600

13.4 Offices under Sala Krong, Sala Srok and Sala Khan

Office Name	Chief		Deputy Chief		No. of Staff				Office Area (m2)	No of vehicle (public or program)	
					State		Contract			vehicle	moto
	M	F	M	F	M	F	M	F			
District/ Khan Cabinet	0	0	1	0	0	0	0	0	Borrow	0	0
Adminnistration Office	1	0	0	1	5	1	0	0	Borrow	0	0
Economy Office	0	0	1	0	2	0	0	0	Borrow	0	0
Social Affair Office	1	0	1	0	0	0	0	0	Borrow	0	0

13.5 Municipality/District/Khan line offices

Office Name	Chief		Deputy Chief		No. of Staff				Office Area (m2)	No of vehicle (public or program)	
					State		Contract				
	M	F	M	F	M	F	M	F		vehicle	moto
District/ Khan Police Headquarter	1	0	4	0	26	1	0	0	3036	0	3
District/ Khan Military Police Headquarter	1	0	4	0	9	0	0	0	Borrow	0	0
District/ Khan Military Subregion	1	0	3	0	11	0	0	0	5664	0	0
Planning Office	1	0	1	0	0	0	0	0	Borrow	0	1
Rural Development Office	1	0	1	0	0	0	0	0	Borrow	0	0
Women Affairs Office	0	1	0	0	0	1	0	2	Borrow	0	1
Environment Office	1	0	1	0	1	0	0	0	Borrow	0	0
Education Office	0	0	2	0	5	1	0	0	Borrow	0	1
Agriculture Office	1	0	1	0	3	0	0	0	Borrow	0	4
Social Affairs Office	1	0	1	0	0	0	0	0	Borrow	0	0
Culture Office	1	0	1	0	0	0	5	1	Borrow	0	0
Cult and Religion Office	0	0	0	0	0	0	1	0	Borrow	0	0
Information Office	1	0	1	0	0	0	0	0	Borrow	0	0
Public Work Office	1	0	0	0	1	0	0	0	Borrow	0	0
Lan Management Office	1	0	2	0	2	0	0	0	Borrow	0	1
Tax Unit	1	0	1	0	1	0	0	0	250	0	0
Industry Office	1	0	0	0	1	0	0	0	Borrow	0	0
Water Resources Office	1	0	0	0	0	0	0	0	Borrow	0	1

13.6 Properties and Equipment of District Administration

13.6.1 Buildings

Description	Unit	Number	Remark
Office building type			
- Concrete	building	1	
- Wood	building	0	
- Mixed	building	0	
Total floor space	m2		
- Concrete	m2	301.32	
- Wood	m2	0	
- Mixed	m2	0	
Building condition			
- Concrete	%	70	
- Wood	%	0	
- Mixed	%	0	
Office reserved land area	m2	1,800	
Total office land area	m2	14,612	

13.6.2 Means of Transport available at the District Administration

Description	Unit	Number	Remark
Vehicle (type, size and condition)	Vehicle	0	
Motorcycle (type, size and condition)	Motor	0	

13.6.3 Equipment in District Offices

Description	Unit	Number	Remark
Generator	per set	0	
Photocopy machine at the office	per set	0	
Private photocopy machine at the district town	place	2	
Telephone network (mobile line service)	network	4	012,097,011,015/016
Telephone network (land line service)	network	0	
Fax (include Fax number)	per set	0	
Computer	per set	2	
Printer	per set	1	
Scanner	Per set	1	
Number of computers those can access Internet and email services in the municipality/ district/khan office (including the technical line offices (please provide the email address)	set	0	
Typewriters (including the technical line offices)	per set	2	
Staff of Municipality/district/khan office can use computer	person	0	

13.6.4 Equipment and facilities at the District Town

Description	Unit	Number	Remark
Availability of electricity at noon	Nr Hours	12	
Private internet and email services in the municipality/ district/khan town.	place	0	

13.7 Registered Revenue of the District Administration in 2008⁴

Sources of Revenue	Revenue Collecting Agency	Estimated annual revenue (In Riels)
Resort	Provincial Department of Tourism	-
Tax imposed on merchants	Department of Economy and Finance	-
Border Check-Point	Camcontrol	-
Taxes	Provincial Taxation Branch	51,459,000
Revenue Tax	Provincial Taxation Branch	1,203,000
Turn Over Tax	Provincial Taxation Branch	5,582,000
Patent	Provincial Taxation Branch	3,039,000
Public Lightening Tax	Provincial Taxation Branch	120,000
Transportation Tax	Provincial Taxation Branch	41,065,000
Fine	Provincial Taxation Branch	110,000
Tamp Tax	Provincial Taxation Branch	154,000
Selling Documents	Provincial Taxation Branch	186,000

13.8 Services in the District

13.8.1 Public Sector Services

Type of Infrastructure/services	Unit	Number	
		Public	Private
Schools			
Pre-school	room	9	0
Primary School	room	169	0
Secondary school	room	25	0
High School	room	58	0
University	room		
Health			
Health post	place		
Health center	place	4	0
Referral Hospital	bed		

13.9 Civil Society Organizations active in the District

13.9.1 NGOs, Associations, Programs and Projects

Name	Abbr.	Sector Activities	No. of Target Communes	No. of Target Villages	Office in District
NA	NA	បច្ចេកទេសកសិកម្ម	2	10	No
NA	NA	កសិកម្ម និងអភិវឌ្ឍន៍ជនបទ	6	17	No
NA	NA	ធនាគារ	6	34	Yes
NA	NA	ធនាគារ	3	20	No
NA	NA	ធនាគារ	6	34	Yes
NA	NA	គាំទ្រឃុំផ្នែកកសិកម្ម	4	24	No

⁴ Please note that the data in this table are at best estimates. If the table appears blank it does not mean there is no revenue, just that the data have not been recorded/entered.

13.9.2 Political Parties active in the Municipality, District and Khan

Name	Abbr.	Office in District
Cambodian People Party	CPP	Yes
FUNCINPEC Party	FUNCINPEC	Yes
Human Rights Party	HRP	No
NA	NA	No
NRP	NRP	No
SAM RAINSY Party	Sam Rainsy Party	Yes

13.10 Private Sector Organizations

13.10.1 Registered Companies in 2008, by District

There were no data available for this district at the time data collection

13.10.2 Farmers in 2008, by District

There were no data available for this district at the time data collection

SECTION E: POVERTY DATA

14 Data on Poverty

14.1 Predicted Poverty Rates for 2009, by commune

The **Predicted Family Poverty Rate** is based on a statistical model (robust multilevel mixed effect regression) at village level developed by the NCDD M&E Unit and uses CDB data for making an estimate of the predicted poverty rate (this is: *the portion of total families in the district or commune who are expected to be poor*) for the following year using current year data.

The basis for this predicted poverty rate also uses IDPoor (a project of the Ministry of Planning with technical assistance provided by GTZ) data

Commune	2004	2009
Angkor Borei	31%	29.30%
Ba Srae	33.70%	27%
Kouk Thlok	41.60%	33.90%
Ponley	26.90%	22.70%
Preaek Phtoul	39.60%	30.60%
Prey Phkoam	36.90%	30.40%

14.2 Poverty data from survey

14.2.1 Identification of Poor Households Program (IDPoor)

The Ministry of Planning IDPoor Program has developed standardized Procedures for Identification of Poor Households in rural areas. These Procedures are implemented using a participatory and consultative process by sub-national government structures and community representatives.

The IDPoor Program is managed by the Ministry of Planning (MOP), in cooperation with the Ministry of Interior's Department of Local Administration (DOLA). The program is supported by the Federal Republic of Germany, with technical assistance provided by German Technical Cooperation (GTZ). In 2009, AusAID also provided funding support to the Program.

Objective

The IDPoor Program aims to implement the Procedures for Identification of Poor Households in rural areas as widely as possible, in order to provide data on the level of poverty of areas and households that can be used by a large range of institutions and organizations for targeting services and development assistance to poor areas and poor households.

Coverage: During 2007, 2008 and 2009 the IDPoor Procedures have been implemented in 18 provinces (with partial or complete coverage), covering a total of around 7000 rural villages. The MOP and a number of NGO partners who are Health Equity Fund Operators have collaborated in collecting this data from different areas.

Categorization: Identified poor households are classified under two poverty categories: Poor Level 1 (very poor), and Poor Level 2 (poor). Households are classified based on data collected using a standard questionnaire, together with consideration by villagers of these households' special circumstances.

Further information: Please go to the IDPoor Program webpage at www.mop.gov.kh/Projects/IDPoor/tabid/154/Default.aspx

This District has not yet been covered by IDPoor